

CP-104JU V2

4-port RS-232 Universal PCI Smart Serial Board

Features

- Over 800 Kbps data throughput, for top performance
- Serial communication speed up to 921.6 Kbps
- 128-byte FIFO and on-chip H/W, S/W flow control
- Universal PCI compatible with 3.3/5V PCI and PCI-X
- Windows 2003/XP/2000/98/ME, Linux, UNIX driver support
- Built-in RJ45 connectors to save cabling space
- Easy maintenance with on-board LED display and management software
- Single 5 VDC power requirement
- On-board 15 KV ESD protection



Overview

CP-104JU V2 is a Smart Universal PCI Multiport Serial Board designed for POS and ATM applications, and for use by industrial automation system manufacturers and system integrators. CP-104JU V2 is compatible with all popular operating systems, and each of its 4 RS-232 serial ports supports data rates of up to

921.6 Kbps, and provides full modem control signals, ensuring compatibility with a wide range of serial peripherals. In addition, CP-104JU V2 works with both 3.3V and 5V PCI buses, allowing the board to be installed in virtually any available PC server.

Top Performance with 128-byte FIFO and On-chip H/W, S/W Flow Control

Our 17 plus years of experience in serial board design is now concentrated in Moxa's new top performance serial data transmission chip, called Turbo Serial Engine™, which equips the CP-104JU V2 series board with a 128-byte FIFO, on-chip

hardware and software flow control, and burst data mode. This makes CP-104JU V2 the top performing smart multiport serial board in the world.

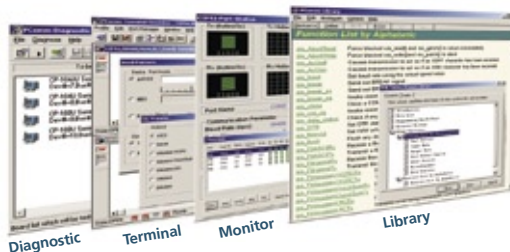
Support for Major Windows and Linux/Unix OS drivers

Moxa continues to add support for today's mainstream operating systems, and CP-104JU V2, which supports reliable Windows COM and Linux/UNIX TTY drivers, is no exception. In addition,

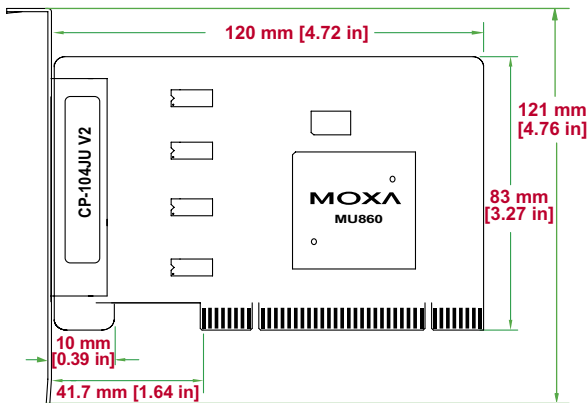
other operating systems, such as embedded Windows XP and QNX, are supported for embedded integration applications.

PComm Lite Utility for Easy Management and Software Development

CP-104JU's software package includes Moxa's PComm Lite utility, which can be used to diagnose and monitor the status of installed Moxa serial boards. In addition, PComm Library, which includes libraries of basic serial I/O and file transfer functions, is included free of charge, giving users a complete and easy to use software development tool for Windows applications.

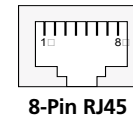
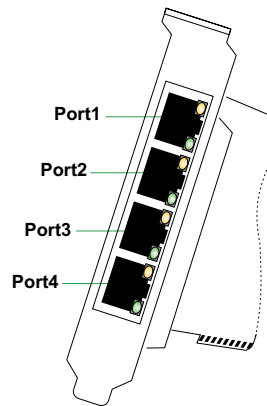


Dimensions



On-Board LED Display

- Yellow--Transmit
- Green--Receive

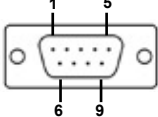


8-Pin RJ45

PIN	RJ45
1	DSR
2	RTS
3	GND
4	TxD
5	RxD
6	DCD
7	CTS
8	DTR

Connection Options

Male DB9



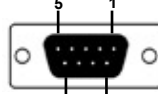
PIN	DB9(M)	PIN	DB9(M)
1	DCD	5	GND
2	RxD	6	DSR
3	TxD	7	RTS
4	DTR	8	CTS

CBL-RJ45M9-150

8-pin RJ45 to male DB9,
150 cm Cable



Female DB9



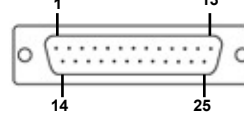
PIN	DB9(F)	PIN	DB9(F)
1	DCD	5	GND
2	TxD	6	DTR
3	RxD	7	CTS
4	DSR	8	RTS

CBL-RJ45F9-150

8-pin RJ45 to female DB9,
150 cm Cable



Male DB25



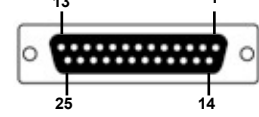
PIN	DB25(M)	PIN	DB25(M)
2	TxD	6	DSR
3	RxD	7	GND
4	RTS	8	DCD
5	CTS	20	DTR

CBL-M45M25-150

8-pin RJ45 to male DB25,
150 cm Cable



Female DB25



PIN	DB25(F)	PIN	DB25(F)
2	RxD	6	DTR
3	TxD	7	GND
4	CTS	8	DCD
5	RTS	20	DSR

CBL-M45F25-150

8-pin RJ45 to female DB25,
150 cm Cable



Specifications

Hardware

Connectors: 8-pin RJ45

Comm. Controller: MOXA UART (16C550C compatible)

Interface

Bus Interface: 32-bit Universal PCI

Number of Ports: 4

Max. No. of Boards: 4 (only one IRQ required)

Signals: TxD, RxD, RTS, CTS, DTR, DSR, DCD, GND

Performance

Baud Rate: 50 bps to 921.6 Kbps

Configuration

Data Bits: 5, 6, 7, 8

Stop Bits: 1, 1.5, 2

I/O address/IRQ: BIOS assigned

Parity: None, Even, Odd, Space, Mark

Flow Control: RTS/CTS, XON/XOFF

Operating Systems:

Windows NT/2000/XP/2003, Windows95/98/ME, Linux 2.4/2.6 (Red Hat/SuSe...), FreeBSD, SCO OpenServer, SCO Unixware 7, SCO Unixware 2.1, Windows XP Embedded, QNX, DOS

Power and Environment

Power Requirement: 135 mA (+5V)

Operating Temperature: 0 to 55°C

Operating Humidity: 5 to 95% RH

Storage Temperature: -20 to 85°C

Dimensions (W x D): 120 x 83 mm (4.72 x 3.27 in)

(Std. Bracket: 121 mm)

Surge Protection: Embedded 15 KV ESD Surge Protection

Regulatory Approvals: CE Class B, FCC Class B

Warranty: 5 years

Ordering Information

CP-104JU V2

4-port RS-232 Universal PCI Smart MSB, 8-pin RJ45 connectors

All items include: Documentation & Software CD-ROM

*Connection cable is an optional accessory.

Optional Connectors

CBL-RJ45M9-150: 8-pin RJ45 to male DB9 cable, 150 cm

CBL-RJ45F9-150: 8-pin RJ45 to female DB9 cable, 150 cm

CBL-RJ45M25-150: 8-pin RJ45 to male DB25 cable, 150 cm

CBL-RJ45F25-150: 8-pin RJ45 to female DB25 cable, 150 cm