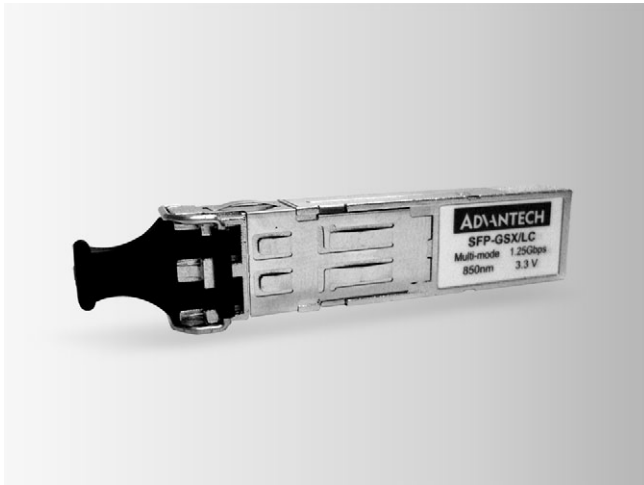


# Accessories

## SFP Transceiver Modules



### Features

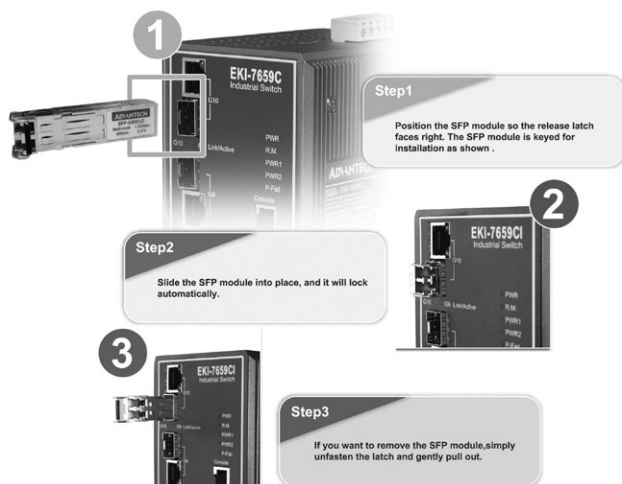
- Industry standard small form pluggable (SFP) package
- Immovable lock design
- Hot pluggable
- Duplex LC connector
- Full duplex speeds support
- TTL signal detect indicator
- 3.3 V<sub>DC</sub> power supply
- Industry leading EMI performance for high port density
- Class 1 laser product complies with EN 60825-1
- RoHS compliant

### Introduction

Advantech's Small Form-factor Pluggable (SFP) transceiver family is available with a variety of different types, allowing users to select the appropriate transceiver for each link to provide the required optical reach over the available optical fiber type. Advantech's SFP transceiver immovable lock design can fix SFP module into the switch firmly. Besides Advantech's SFP transceiver's compact design provides high port density and compliant with Fast Ethernet and IEEE802.3z Gigabit Ethernet Standards. Advantech's SFP transceivers ensure your networks operate with maximum performance, reliability, and flexibility.

### Specifications

Category	Distance	Model Name	Wave length	Tx Power	Rx sensitivity	Link Budget
100Base-FX	M.M. (2 km)	SFP-FXM/LC	1310 nm	-14dBm (min) ~ -20dBm (Max)	-31dBm (Max)	11dB
	S.M. (30 km)	SFP-FXS/LC-30	1310 nm	-8dBm (min) ~ -15dBm (Max)	-34dBm (Max)	11dB
1000Base	SX (550 m)	SFP-GSX/LC	850 nm	-4dBm (min) ~ -9.5dBm (Max)	-18dBm (Max)	19dB
	LX (10 km)	SFP-GLX/LC-10	1310 nm	-3dBm (min) ~ -9.5dBm (Max)	-20dBm (Max)	19dB
	LX (20 km)	SFP-GLX/LC-20	1310 nm	-2dBm (min) ~ -8dBm (Max)	-23dBm (Max)	19dB
	LX (40 km)	SFP-GLX/LC-40	1310 nm	+1dBm (min) ~ -4dBm (Max)	-24dBm (Max)	20dB
1000Base	Up to 100 m	SFP-GTX/RJ45	N/A	N/A	N/A	N/A



Note: Don't remove the SFP module plugs until you are ready to install the cables

### Ordering Information

- **SFP-FXM/LC** 100Base-FX Multi-mode SFP module
- **SFP-FXS/LC-30** 100Base-FX Single-mode SFP module
- **SFP-GSX/LC** 1000Base-SX Multi-mode SFP module
- **SFP-GLX/LC-10** 1000Base-LX Single-mode SFP module (10 km)
- **SFP-GLX/LC-20** 1000Base-LX Single-mode SFP module (20 km)
- **SFP-GLX/LC-40** 1000Base-LX Single-mode SFP module (40 km)
- **SFP-GTX/RJ45** 1000Base RJ45 SFP module