

ADAM-5024

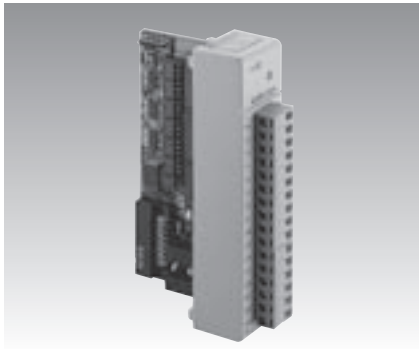
ADAM-5050

ADAM-5051/5051D

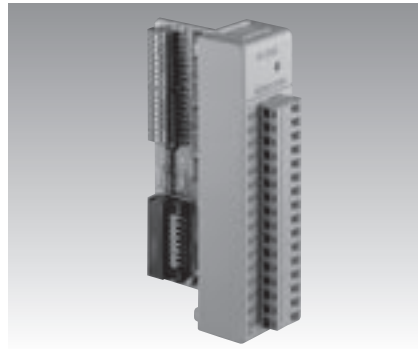
4-ch Analog Output Module

16-ch Universal Digital I/O Module

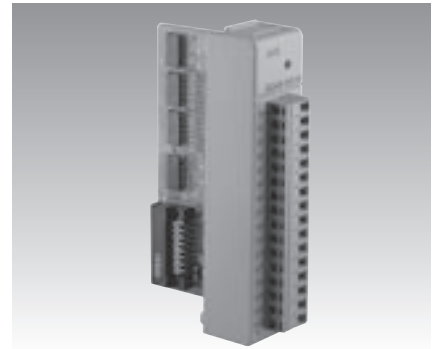
16-ch Digital Input Modules



ADAM-5024



ADAM-5050



ADAM-5051
ADAM-5051D



Specifications

General

- **Certifications** CE, FM
- **Connectors** 1 x Plug-in screw terminal (# 14~22 AWG)
- **Power Consumption** 2.9 W (max.)

Analog Output

- **Accuracy** $\pm 0.1\%$ of FSR for current output
 $\pm 0.2\%$ of FSR for voltage output
- **Channels** 4
- **Current Load Resistor** 0 ~ 500 Ω (source)
- **Output Type** mA, V
- **Output Range** 0 ~ 20 mA, 4 ~ 20 mA, 0 ~ 10 V
- **Programmable Output Slope** 0.125 ~ 128.0 mA/sec.
0.0625 ~ 64.0 V/sec.
- **Resolution** 12-bit
- **Resolution** $\pm 0.015\%$ of FSR
- **Span Temperature Coefficient** ± 25 PPM/ $^{\circ}$ C
- **Zero Drift** Voltage: ± 30 μ V/ $^{\circ}$ C
Current: ± 0.2 μ V/ $^{\circ}$ C

Protection

- **Isolation Voltage** 3,000 V_{DC}

Ordering Information

- **ADAM-5024** 4-ch Analog Output Module

Specifications

General

- **Certifications** CE, FM
- **Connectors** 1 x Plug-in screw terminal (# 14~22 AWG)
- **Power Consumption** 1.2 W (max.)

Digital I/O

- **Channels** 16
- **Channel I/O Type** Bit-wise selectable by DIP switch
- **Digital Input** Dry Contact:
Logic level 0: close to GND
Logic level 1: open
Wet Contact:
Logic level 0: 2 V max.
Logic level 1: 4 ~ 30 V
- **Digital Output** Open collector to 30 V,
100 mA and 450 mW max. load
- **Power Dissipation** 300 mW for each channel

Ordering Information

- **ADAM-5050** 16-ch Universal Digital Input/Output Module

Specifications

General

- **Certifications** CE, FM (ADAM-5051 only)
- **Connectors** 1 x Plug-in screw terminal (# 14~22 AWG)
- **LED Indicators: (ADAM-5051D)**

On: Input logic level 1
Input floating
Off: Input logic level 0

▪ **Power Consumption** ADAM-5051: 0.53 W (max.)
ADAM-5051D: 0.84 W (max.)

Digital Input

- **Circuit Type** Pull-up current: 0.5 mA (Source Type)
- **Channels** 16
- **Input Voltage** 30 V_{max}
- **Logic Level** Logic level 0: 1 V max.
Logic level 1: 3.5 ~ 30 V

Ordering Information

- **ADAM-5051** 16-ch Digital Input Module
- **ADAM-5051D** 16-ch Digital Input Module with LED