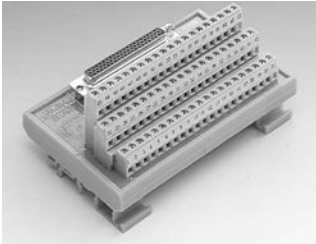


ADAM-3900 Series

Wiring Terminals for DIN-rail Mounting



ADAM-3962

DB62 Wiring Terminal for DIN-rail Mounting

Features

- Low cost universal DIN-rail mounting screw terminal module for DA&C cards with DB62 female connector
- Screw-clamp terminal blocks allow easy and reliable connections
- Case dimensions (W x L x H): 77.5 x 124.5 x 63.5 mm (3.1" x 4.9" x 2.5")

To Be Used With

PCI-1762



ADAM-3968/50

68-pin SCSI-II to Two 50-pin Box Header for DIN-rail Mounting

Features

- Low cost universal DIN-rail mounting screw terminal module for PC-LabCard™ products with 68-pin SCSI-II connectors
- Converts one 68-pin SCSI-II connector to two 50-pin Opto-22 compatible box headers
- Case dimensions (W x L x H): 77.0 x 101.0 x 54.3 mm (3.0" x 4.0" x 2.1")

To Be Used With

PCI-1751, PCI-1753, PCI-1753E



ADAM-3968

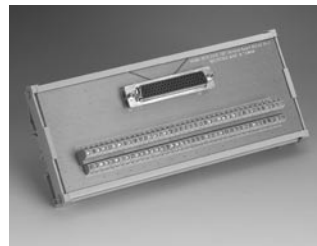
68-pin SCSI-II Wiring Terminal for DIN-rail Mounting

Features

- Low cost universal DIN-rail mounting screw terminal module for industrial applications with 68-pin SCSI-II female connector
- Case dimensions (W x L x H): 77.5 x 191.2 x 51 mm (3.1" x 8.4" x 2.0")

To Be Used With

PCI-1710/1710L, PCI-1710HG/1710HGL, PCI-1711/1711L,
PCI-1712/1712L, PCI-1716/1716L, PCI-1721, PCI-1751,
PCI-1753/1753E, PCI-1723, PCI-1780



ADAM-3978

DB78 Wiring Terminal for DIN-rail Mounting

Features

- Mounting Low cost universal DIN-rail mounting screw terminal module for industrial applications with DB78 female connector
- Case dimensions (W x L x H): 86 x 191 x 42 mm (3.39" x 7.51" x 1.65")

To Be Used With

MIC-3753, PCI-3756



ADAM-3968/20

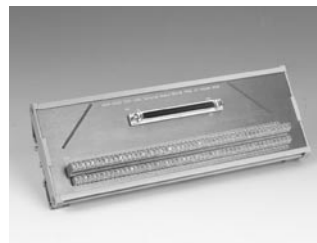
68-pin SCSI-II to Three 20-pin Wiring Terminal Module for DIN-rail Mounting

Features

- Low cost universal DIN-rail mounting screw terminal module for PC-LabCard™ products with 68-pin SCSI-II connectors
- Converts one 68-pin SCSI-II connector to three 20-pin connectors
- Case dimensions (W x L x H): 77.5 x 80 x 54.3 mm (3.1" x 3.2" x 2.1")

To Be Used With

PCI-1751, PCI-1753, PCI-1753E



ADAM-39100

100-pin SCSI-II Wiring Terminal for DIN-rail Mounting

Features

- Low cost universal DIN-rail mounting screw terminal module for industrial applications with 100 pin SCSI-II female connector
- Case dimensions (W x L x H): 80 x 230 x 42 mm (3.14" x 9.05" x 1.65")

To Be Used With

PCI-1755