

# PCM-3725

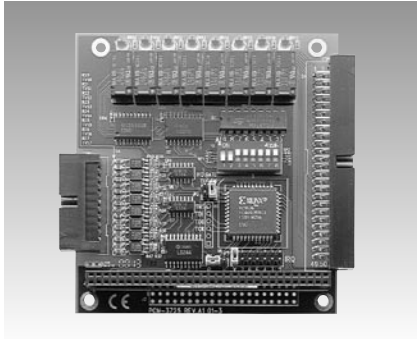
# PCM-3730

# PCM-3780

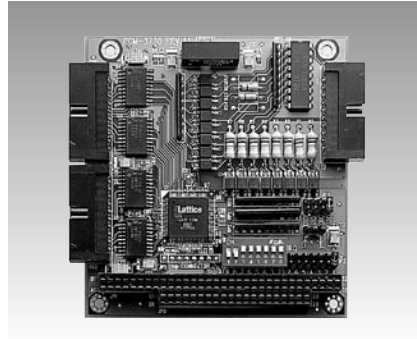
8-ch Isolated DI and 8-ch Relay Output Module

16-ch Isolated Digital I/O Module

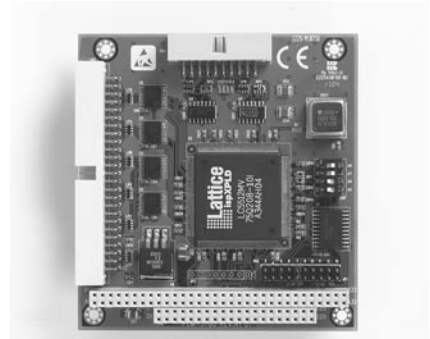
3-ch Counter/Timer with 24-ch TTL DI/O Module



PCM-3725



PCM-3730



PCM-3780



## Features

- LED indicators to show activated relays

## Specifications

### Isolated Digital Input

- Channels: 8
- Input Voltage: Logic 0: 3 V  
Logic 1: 10 V (50 V max.)
- Isolation Protection: 2500 V<sub>DC</sub>
- Overvoltage Protection: 70 V<sub>DC</sub>
- Opto-Isolator Response: 25 μs
- Input Resistance: 4.7 KΩ

### Relay Output

- Channels: 8
- Relay Type: SPDT (Form C)
- Contact Rating: 30 V<sub>DC</sub> @ 1.5 A
- Relay on Time: 4 ms
- Relay off Time: 4 ms
- Life Span: 100000 min @ 2 A/30 V
- Resistance: Contact: 100 MΩ  
Insulation: 1 GΩ @ 500 V<sub>DC</sub>

### General

- Bus Type: PC/104
- I/O Connectors: 1 x 20-pin head for IDI  
1 x 50-pin head for relay
- Dimensions (L x H): 96 x 90 mm (3.8" x 3.5")
- Power Consumption: Typical: 100 mA @ +5 V  
Max: 280 mA @ +5 V
- Operating Temperature: 0 ~ 60° C (32 ~ 158° F)
- Storing Temperature: -20~70° C (-4 ~ 158° F)
- Storing Humidity: 5 ~ 95% RH, non-cond.

## Ordering Information

- PCM-3725: 8-ch isolated digital input and 8-ch relay output module, user manual and driver CD-ROM. (no cables inc.)
- PCL-10120-1: 20-pin flat cable 1 m
- PCL-10120-2: 20-pin flat cable 2 m
- PCL-10150-1.2: 50-pin flat cable 1.2 m
- ADAM-3920: 20-pin flat cable wiring terminal for DIN-rail
- ADAM-3950: 50-pin flat cable wiring terminal for DIN-rail
- PCLD-780: Screw-Terminal Board for 20-pin Flat Cable

## Features

- High driving capacity and high-voltage isolation

## Specifications

### Digital Input

- Channels: 16, 5 V/TTL
- Interrupt Capable Ch.: 4

### Isolated Digital Input

- Channels: 8
- Input Voltage: Logic 0: 2 V max.  
Logic 1: 5 V min. (24 V max.)
- Isolation Protection: 2,500 V<sub>DC</sub>
- Opto-Isolator Response: 0.1 ms
- Input Resistance: 2 kΩ @ 0.5 V

### Digital Output

- Channels: 16, 5 V/TTL
- Output Capability: Sink: 8 mA @ 0.5 V max.  
Source: -0.4 mA @ 2.4 V min.

### Isolated Digital Output

- Channels: 8
- Output Type: Sink (NPN)
- Isolation Protection: 2,500 V<sub>DC</sub>
- Output Voltage: 5 ~ 40 V<sub>DC</sub>
- Sink Current: 200 mA max./channel
- Opto-Isolator Response: 100 μs

### General

- Bus Type: PC/104
- I/O Connectors: 3 x 20-pin box header
- Dimensions (L x H): 96 x 90 mm (3.8" x 3.5")
- Power Consumption: Typical: 330 mA @ +5 V  
Max: 500 mA @ +5 V
- Operating Temperature: 0 ~ 60° C (32 ~ 158° F)
- Storing Temperature: -20~70° C (-4 ~ 158° F)
- Storing Humidity: 5 ~ 95% RH, non-cond.

## Ordering Information

- PCM-3730: 16-ch isol. digital I/O module, user's manual and driver CD-ROM. (cable included)
- PCL-10120-1: 20-pin flat cable, 1 m
- PCL-10120-2: 20-pin flat cable, 2 m
- ADAM-3920: 20-pin flat cable wiring terminal for DIN-Rail mt.
- PCLD-780: Screw-terminal board for 20-pin flat cable
- PCLD-785/885: 16-ch relay/power relay output board

## Specifications

### Programmable counter

- 2 independent 16-bit counters
- 4 independent programmable clock sources (10 M, 1 M, 100 k, 10 k)
- 12 programmable counter modes

### Digital Input

- Channels: 24 (shared with output)
- Compatibility: 5 V/TTL
- Input Voltage: Logic 0: 0.8 V max.  
Logic 1: 2.4 V min.
- Interrupt Capable Ch.: 24

### Digital Output

- Channels: 24 (shared with input)
- Compatibility: 5 V/TTL
- Output Voltage: Logic 0: 0.5 V max. @ 24 mA (sink)  
Logic 1: 2.4 V min. @ 15 mA (source)

### Counter/Timer

- Channels: 2
- Resolution: 16 bits
- Compatibility: 5 V/TTL
- Max. Input Frequency: 20 MHz
- Counter Modes: 12 (programmable)
- Interrupt Capable Ch.: 2

### General

- Bus Type: PC/104
- I/O Connectors: 1 x 50-pin box header  
1 x 20-pin box header
- Dimensions (L x H): 96 x 90 mm (3.8" x 3.5")
- Power Consumption: Typical: +5 V @ 300 mA  
Max.: +5 V @ 0.8 A
- Operating Temperature: 0 ~ 60° C (32 ~ 158° F)
- Storing Temperature: -20~70° C (-4 ~ 158° F)
- Operating Humidity: 5 ~ 85% RH non-cond.

## Ordering Information

- PCM-3780: 2-ch counter/timer with 24-ch TTL DIO
- PCL-10120-1: 20-pin flat cable 1 m
- PCL-10150-1.2: 50-pin flat cable 1.2 m
- ADAM-3920/50: 20/50-pin flat cable wiring terminal for DIN-rail