

TOTO KU

ME Series

2 Megapixel 21.3" Monochrome LCD

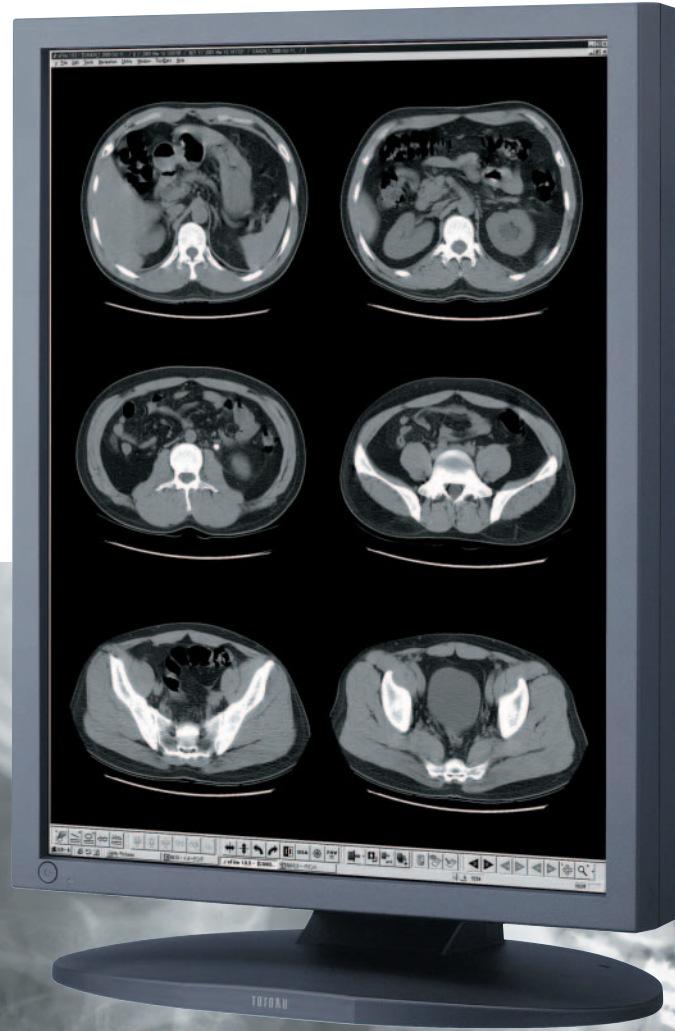
NEW **ME213L** C B

ME213L /C (clear base), ME213L /B (blue base)

21.3"	Monochrome liquid crystal panel	Analog & Digital	1200 × 1600
High luminance 1500cd/m²	Contrast 700:1	10-bit display	VESA mounting



Flat Display Systems
for
Medical Imaging



21.3"

 Medivisor® 

**2 Megapixel High-Resolution monochrome LCD
with Super-High Luminance 1500cd/m²
and Longer Lifetime**

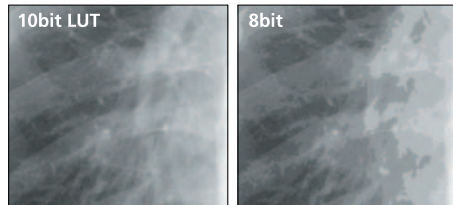


A large (21.3") 2 megapixel high-resolution monochrome LCD, ME213L, mounted with super-high luminance and long lifetime backlight

Newly developed λ -X3 technology achieved super-high luminance (1500cd/m²) and long lifetime (Three-times longer than other TOTOKU displays). Along with the use of λ -sentinel (a built-in luminance stabilizing circuit), ME213L delivers and maintains stable luminance for a long period of time.

Excellent 10bit display

The built-in LUT (Look Up Table) converts 8bit (256 shades of gray) input image data from graphics card into 10bit (1021 shades of gray), which enhances the image quality and accuracy.



*The images shown are for illustrative purposes.

Color/monochrome conversion

Because of the color/monochrome conversion function, clear monochrome images can be displayed on a system that handles color video signals. A multi-monitor is possible by using color displays.

Hardware pivot function

ME213L comes standard with a hardware pivot function. When used in conjunction with a TOTOKU graphics card, high speed operation is achieved in either landscape or portrait orientation.

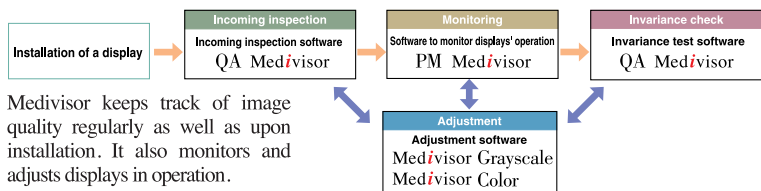
DICOM Part 14 standard

Gamma curve data is stored within the display during calibration. This enables smooth grayscale display. The display is compatible with DICOM part 14 standard* gamma curve. (Re-calibration is required for analog input.)
* DICOM part 14: Standards for grayscale standard display function on digital images and communications for medical purposes.

λ -Sentinel Stable luminance by λ -Sentinel

λ -Sentinel brings the backlight to the preset (calibrated) luminance within seconds and keeps it there with a multi-sensor, feedback control circuit, thereby maintaining calibration through backlight aging and temperature variations.

MediVisor (optional software)



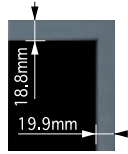
MediVisor keeps track of image quality regularly as well as upon installation. It also monitors and adjusts displays in operation.

Clear-base/ Blue-base LCD Panel

ME213L offers two choices of LCD base colors according to the X-ray film color, clear and blue.

Structure

- The standard tilt stand can be removed. The display is designed for VESA® standard mounting, so it can be wall mounted or used connected to an arm or other equipment.
- Slim bezel for optimum viewing of multi-display installations.



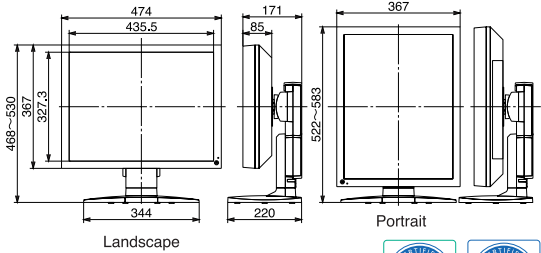
* VESA: Abbreviation of Video Electronics Standards Association. The association determines standards concerning displays.

Compliance with standards

The display is certified to UL, CSA, and TÜV medical standards.



Model name	Clear-base : ME213L /C, ME213L /CI (with Protective filter) Blue-base : ME213L /B, ME213L /BF (with Protective filter)
LCD panel	21.3" TFT monochrome LCD Viewing angle 170° (vertically and horizontally) Contrast 700:1
Screen display size	Horizontal: 432.0mm, vertical: 324.0mm (when used width wise)
Input signal	Digital: In conformity with DVI Rev 1.0, Analog : Analog RGB (Sync on video)
Resolution	640 x 480 (VGA) ~ 1600 x 1200 (UXGA)
Grayscale display	1021-step gradation to 256 gradation display
Maximum luminance (typical)	1500 cd/m ² (calibrated to 410cd/m ² by factory default)
Safety standards	Medical Safety: UL60601-1, CSA C22.2 No.601.1, MDD/CE, TÜVGM, FDA510(K) (applying) EMC: FCC-A, VCCI-A, BSMI, MIC
Dimensions (including the tilting base)	Landscape: 474(W) x 468-530(H) x 220(D)mm Portrait: 367(W) x 522-583(H) x 220(D)mm
Weight	Appr. 11.5 kg
Input power supply	AC100 - 240 V 50/60 Hz
Maximum power consumption	85 W Typical (with power management feature)
Calibration control (optional)	Luminance, gamma
Tilting base	Tilting/swiveling base with a vertically/horizontally rotating feature
Other features	OSD (On screen display), DDC2B, RS232C, USB hub
Accessories	AC adapter, power cord, operation manual, DVI cable, VGA cable, serial cable, USB cable



TOTOKU has obtained ISO14001 and ISO9001 certification which are international standards concerning environment management and quality control respectively.



Safety precautions

To ensure safe use of the products, read the Operation Manual / Safety before using them.

Do not install the products in areas where they may be affected by water, dust, humidity, or oily smoke. Storing the products in such conditions could cause a fire, equipment failure or electrical shock.

TOTOKU

TOTOKU Sales Department MM Company Totoku Electric Co., Ltd.
1-3-21 Okubo, Shinjuku-ku, Tokyo 169-8543 TEL: +81 3-5273-2022 FAX: +81 3-5273-2091
*Osaka Branch: +81 6-6352-3541 *Nagoya Branch: +81 52-771-1161 *Shinetsu Branch: +81 268-34-5285

<p>USA TOTOKU NORTH AMERICA, INC 1425 Greenway Dr., Ste. 565 Irving, Tx 75038, U.S.A. TEL : +1-469-442-0112 E-mail : info@totoku-na.com</p>	<p>EUROPE TOTOKU ELECTRIC CO., LTD. Jakob-Krebs-Str. 124 D-47877 Willich-Anrath Germany TEL : +49-2156-4918-0 E-mail : info@totoku.de</p>	<p>ASIA TOTOKU ELECTRIC CO., LTD. 3-21, Okubo-1 Chome Shinjuku-ku, Tokyo, Japan TEL : +81-3-5273-2053 E-mail : mmc@totoku.co.jp</p>
---	---	---

Current and updated information is provided on the Internet at <http://www.totoku.co.jp/dp/>

*Microsoft and Windows are trademarks of the US Microsoft Corporation and are registered in the US and other countries. *Company names and product names are the trademarks or registered trademarks of the respective companies. *Product specifications and appearance are subject to change without notice. *Colors in photographs may differ from actual colors due to the printing process. *Images on screens are simulated.

Please contact the distributor below with inquiries and orders.