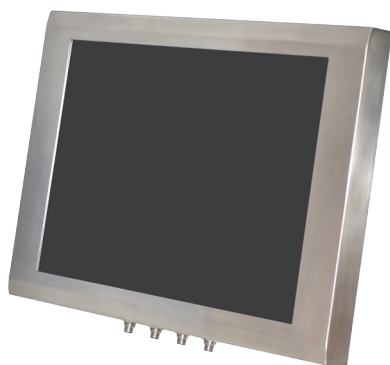


INOSP-191-RE

Stainless Steel Waterproof 19" Panel PC



Features

- Dual-Core Intel® Atom™ D2550 Processor
- Resistive Touch Screen
- Isolated COM Port
- Wide Range 12~36V DC Power Input
- IP65 Grade Protection with L Type Waterproof Cover Option
- IP65 Stainless Steel Power Adaptor Option

Specifications

System Mainboard	IB809
CPU Type	Intel® Atom™ Processor D2550 (1M Cache, 1.86 GHz)
Memory	2x DDR3-1033 /1066 SO-DIMM, up to 4GB
Construction	304 stainless steel/ 316 stainless steel as option
Chassis Color	Silver
I/O Interface	2x Gigabit LAN (RJ45) 2x USB 2.0 (USB Host, A-Type) 1x isolated RS-232/422/485, COM1 1x RS-232, COM3 2in/2out GPIO 1x CFast slot 1x speaker-out microjack 1x Mic-in microjack 12~36V DC input
Expansion I/O	None
Storage	1x 2.5" HDD drive bay
Mounting	VESA mount, 100mm x 100mm
Power Supply	+ 12V DC-in, 84W power adaptor + 24VDC IP65 stainless steel power adaptor (optional)
Dimensions	470mm(W) x 388mm(H) x 60mm(D)
LCD Size	19.0" TFT LCD
LCD Color	16.7M colors
Touch Screen	Resistive touch panel
Display Resolution	1280 x 1024
LCD Brightness	350 cd/cm ²
Dot Pitch	294um x 294um
Viewing Angle	170/160
Backlight MTBF	50,000 hours
Operating Temperature	0°C~ 50°C
Storage Temperature	-20°C~60°C
Relative Humidity	90%
Protection Class	IP65 (except I/O side; Waterproof I/O cover with M12 connector is optional.)

Ordering Information

INOSP-191-RE	19" Stainless Steel Panel PC with IB809, Intel® Atom™ D2550 1.86 GHz, 4GB DDR3 memory, 64G SSD, with resistive touch screen, w/o adaptor
SSPA-24 (option)	90~240V AC input, 24VDC output IP65 stainless steel power adaptor
191B Cover (option)	IP65 I/O cover for INOSP, M12 connectors with LAN/USB2.0 x2/COM and power input. backward direction
191D Cover (option)	IP65 I/O cover for INOSP, M12 connectors with LAN/USB2.0 x2/COM and power input. downward direction

Dimensions

