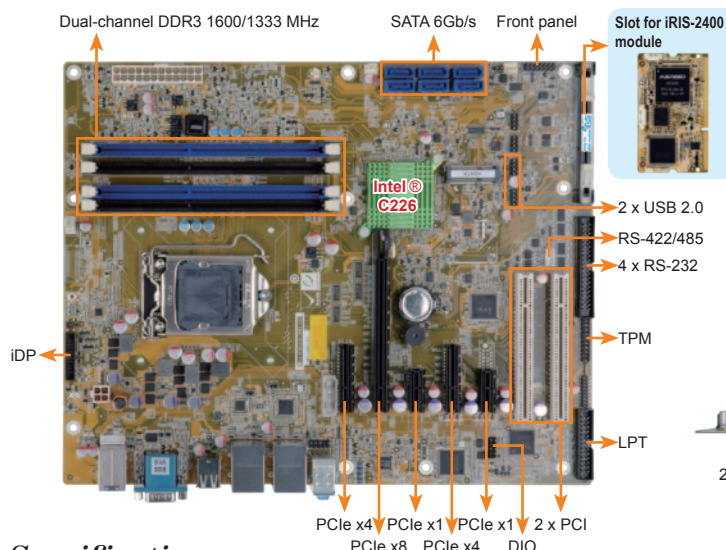


IMBA-C2260-i2

ATX motherboard supports 22nm LGA1150 Intel® Xeon E3, Core™ i3, Pentium® and Celeron® per Intel® C226, DDR3, VGA, Dual Intel® PCIe GbE, Four USB 3.0, Six SATA 6Gb/s, HD Audio, iRIS-2400 and RoHS



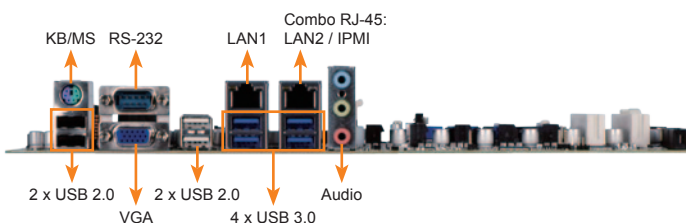
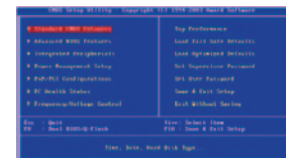
Fully Jumper-less Support

New

NO jumper pin header



Jumper setting via BIOS menu



Specifications

- ◆ CPU
LGA1150 Intel® Xeon® E3, Core™ i3, Pentium® or Celeron® processor supported
- ◆ System Chipset
Intel® C226
- ◆ Memory
Four 240-pin 1600/1333MHz dual-channel DDR3 & DDR3L SDRAM ECC and non-ECC unbuffered DIMMs support up to 32GB
- ◆ BIOS
UEFI BIOS
- ◆ Ethernet
LAN1: Intel® I217LM with Intel® AMT 9.0 support
LAN2: Intel® I210-AT PCIe controller with NCSI support
- ◆ Graphics Engine
Intel® HD Graphics Gen 7.5 supports DX11.1 and OpenCL 1.2, OpenGL 3.2
Full MPEG2, VC1, AVC Decode
- ◆ Display Output
VGA (up to 1920x1200 @ 60 Hz)
iDP interface for HDMI, LVDS, VGA, DVI, DP (up to 3840x2160 @ 60 Hz)
- ◆ Super I/O
Fintek F81866
- ◆ Audio
Realtek ALC662 HD Audio codec (Line-in, Line-out, Mic)
- ◆ I/O Interface
 - 5 x RS-232
 - 1 x RS-422/485
 - 1 x LPT
 - 1 x mSATA (colay SATA port 6) (support SATA 6Gb/s signal only)
 - 1 x 6-pin wafer for PS/2 KB/MS
- ◆ Front Panel
 - 4 x USB 3.0 (rear IO)
 - 8 x USB 2.0 (4 x rear IO, 4 by pin header)
 - 6 x SATA 6Gb/s (RAID 0, 1, 5, 10 supported)
- ◆ Front Audio
 - 2 x 5-pin header
- ◆ LAN LED
 - 2 x 2-pin headers for LAN1 Link LED, LAN2 Link LED
- ◆ TPM
 - 1 x TPM connector (2x10 pin)
- ◆ SMBus
 - 1 x 4 pin wafer
- ◆ I2C
 - 1 x 4 pin wafer
- ◆ iRIS Remote Management Module
 - 1 x iRIS-2400 slot
- ◆ Expansion
 - 1 x PCIe x16 slot
 - 2 x PCIe x4 slot
 - Default setting: 1 x PCIe x8 Gen 3 + 2 x PCIe x4 Gen 3 signal
 - Optional setting: 1 x PCIe x16 Gen 3 by BIOS setting
 - 2 x PCIe x1 slot
 - 2 x PCI slot
- ◆ Watchdog Timer
 - Software programmable, support 1~255 sec. system reset
- ◆ Digital I/O
 - 8-bit digital I/O (4-bit input, 4-bit output)
- ◆ Fan Connector
 - 1 x 4-pin CPU fan connector
 - 2 x 3-pin system fan connector
- ◆ Power Supply
 - ATX power supply
- ◆ Power Consumption
 - 3.3V@0.57A, 5V@4.50A, 12V@0.14A, Vcore_12V@5.20A, 5VSB@0.19A (Intel® E3-1240 v3 3.4GHz CPU with 16GB (4x4GB) 1333MHz DDR3 memory)
- ◆ Operating Temperature: -20°C ~ 60°C
- ◆ Storage Temperature: -30°C ~ 70°C
- ◆ Operating Humidity: 5% ~ 95%, non-condensing
- ◆ Dimensions: 244mm x 305mm
- ◆ Weight: GW:1200g, NW: 700g



Features

1. LGA1150 Intel® Xeon® E3/Core™ i3/Pentium®/Celeron® processor supported
2. Dual-channel DDR3 1600/1333MHz support up to 32GB
3. Intel® PCIe GbE with Intel® AMT 9.0 support
4. Support PCI Express generation 3.0 at 8GT/s I/O bandwidth
5. USB 3.0, SATA 6Gb/s and mSATA supported
6. High-speed interface for one PCIe x8 or two PCIe x4 add-on cards
7. IEI jumper-less function
8. IEI One Key Recovery solution allows you to create rapid OS backup and recovery
9. Support IPMI 2.0 via iRIS-2400 module

Packing List

1 x IMBA-C2260-i2 single board computer	
1 x I/O shielding (P/N: 45014-0045C0-00-RS)	1 x Utility CD
2 x SATA cable (P/N: 32000-062800-RS)	1 x QIG

Ordering Information

Part No.	Description
IMBA-C2260-i2-R10	ATX motherboard supports 22nm LGA1150 Intel® Xeon E3, Core™ i3, Pentium® and Celeron® per Intel® C226, DDR3, VGA, Dual Intel® PCIe GbE, four USB 3.0, six SATA 6Gb/s, HD Audio, iRIS-2400 and RoHS
iRIS-2400-R10	IPMI 2.0 adapter card with AST2400 BMC chip for DDR3 SO-DIMM socket interface
19800-003100-300-RS	Dual-port USB cable with bracket
19800-010500-200-RS	USB 3.0 cable 457mm with bracket
32205-003800-300-RS	RS-422/485 cable, 200mm
32205-001203-200-RS	RS-232 cable, 40-pin to four DB-9
32102-000100-200-RS	SATA power cable, MOLEX 5264-4P to SATA15P
19800-000075-RS	PS/2 KB/MS Y-cable with bracket, 220mm
19800-000049-RS	LPT cable
CF-1156A-RS-R11	High performance LGA1155/LGA1156 cooler kit, 1U chassis compatible, 73W
CF-1156E-R11	High performance LGA1155/LGA1156 cooler kit, 95W
DP-LVDS-R10	DisplayPort to 24-bit dual-channel LVDS converter board (for IEI iDP connector)
DP-HDMI-R10	DisplayPort to HDMI converter board (for IEI iDP connector)
DP-DVI-R10	DisplayPort to DVI-D converter board (for IEI iDP connector)
DP-VGA-R10	DisplayPort to VGA converter board (for IEI iDP connector)
DP-DP-R10	DisplayPort to DisplayPort converter board (for IEI iDP connector)
TPM-IN01-R11	20-pin Infineon TPM module, software management tool, firmware V3.17