

## JetNet 2006-RJ Industrial 6-Port RJ45 Ethernet Switch



CE FC  RoHS

- M12 and Rugged RJ45 Connector for anti-vibration and shock
- Six 10/100 TX auto-negotiation ports with robust RJ45 connectors
- Redundant Power Inputs DC 24V (12~48) by M12 connector
- 3.2 Gbps switch fabric with excellent data exchange performance
- Broadcast storm control
- IEEE802.1p for Class of Service (CoS)
- -25~70°C operating temperature for hazardous environment application
- DNV Approval applying
- Railway EN50155 compliance

### Overview

The JetNet 2006-RJ 10/100 Base-T Ethernet switch is specifically designed for environments with severe vibrations and shocks. It has a metal casing and is equipped with six rugged RJ45 Ethernet connectors that provide reliable connection despite vibrations and shocks. The JetNet 2006-RJ is ready-to-use and features IEEE 802.1p Class of Service, the broadcast

storm control for better transmission performance. It can be easily installed using either DIN-rail mount or wall-mount. The JetNet 2006-RJ is a rugged, easy-to-use, and cost effective solution, and it is the best choice for use on boats, trains, moving vehicles, or heavy machinery.

### Rugged RJ45 Connection for Anti-Vibration, Shock

Commercial RJ45 connectors are not designed to withstand harsh environments and they usually experience link failures and data loss under constant vibrations and shocks. The JetNet 2006-RJ uses M12 connectors instead of commercial RJ45 connectors for greater protection. Therefore, it is robust and it guarantees reliable connections even in harsh conditions.



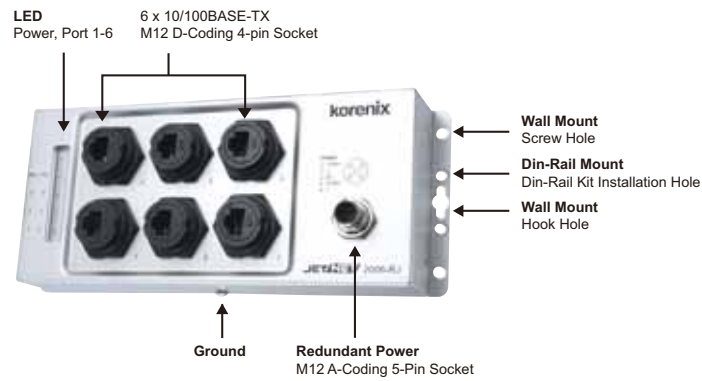
## IP67/IP68 Industrial Ethernet Switch

### Plug-and-Play & High Speed Transmission

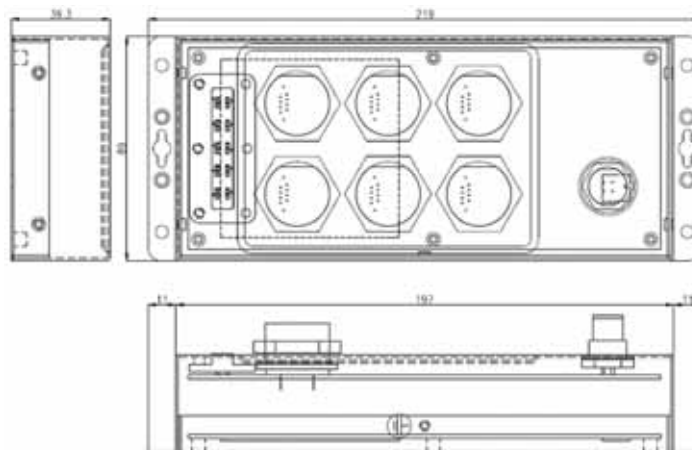
JetNet 2006-RJ requires no user configuration and immediately starts operating once it is powered up. The CoS, broadcast storm control, the 3.2Gbps

wire-speed, and non-blocking switching fabric provide excellent data transmission performance.

### JetNet 2006-RJ Appearance



### Dimensions (Unit –mm)



Industrial  
PoE Switch

IP67/68  
Ethernet Switch

Rackmount  
Managed  
Switch

Gigabit Switch

Redundant  
Switch

Entry-Level  
Switch

Networking  
Computer

Communication  
Computer

Ethernet  
I/O Server

Serial Device  
Server

Media  
Converter

Multiport  
Serial Card

SFP Module

Din Rail  
Power Supply

## Specification

### Technology

#### Standard:

IEEE 802.3 10Base-T  
 IEEE 802.3u 100Base-T  
 IEEE 802.3x Flow Control and Back-pressure  
 IEEE 802.1p Class of Service  
 Broadcast storm control

### Performance

#### Switch Technology:

Store and Forward Technology with 3.2Gbps wire-speed non-blocking Switch Fabric

**System Throughput:** 1.785Mpps

**MAC Address:** 2000

**Packet Buffer:** Embedded 1Mbits shared buffer

**Transfer performance:** 14,880pps for Ethernet and 148,810pps for Fast Ethernet

**Transfer packet size:** from 64 to 1522Bytes

### Interface

#### Number of Ports:

6 x 10/100Base-TX ports

#### Connectors:

10/100TX: Rugged RJ45

Power: M12 A-coding 5-pin connector

#### Cable:

10Base-T: 4-pair UTP/STP Cat. 4, 5 cable,  
 100Base-TX: 4-pair UTP/STP Cat.5, Cat.5E/Cat.6 cable,

#### Diagnostic LED:

Power LED: Power 1/Power 2 (Green)  
 Fast Ethernet Port 1~6: Link (Green)/Activity (Green blinking)

### Power Requirements

**System Power:** Support positive or negative power system

#### Power Consumption:

Operating Voltage: 12 to 48V DC  
 Power consumption: max 6 Watts @ 48V

### Mechanical

#### Protection class: IP31

**Installation:** Din-Rail and Wall-mounting

**Case:** Aluminum metal case

**Dimension:** 89 mm (H) x 219 mm (W) x 39.3 mm (D)

**Weight:** 615g without package

### Environmental

**Operating Temperature:** -25 ~ 70°C

**Storage Temperature:** -40 ~ 80°C

### Regulatory Approvals

**Safety:** CE/EN60950

**IEC 60945 DNV:** pending

**EN 50155 Railway:** pending

**UL1604 Hazardous Location:** pending

#### EMI:

FCC Class A; CE/EN55022:2003 Class A;

CE/EN61000-3-2:2001 Harmonic Test;

CE/EN61000-3-3:1995 Flicker test

#### EMS:

EN61000-4-2:1998, ESD

EN61000-4-3:1998, RS

EN61000-4-4:1995, EFT

EN61000-4-5:1995, Surge

EN61000-4-6:1996, CS

**Shock:** IEC60068-2-27, EN61373

**Vibration:** IEC60068-2-6, EN61373

**Free Fall:** IEC60068-2-32

**Warranty:** 5 years

## Ordering Information

### JetNet 2006-RJ Industrial 6-port RJ45 Ethernet Switch

Includes:

- JetNet 2006-RJ
- Rugged RJ45 connector x 6
- Field assembleable M12 A-coding 5-pin connector x 1
- Cap of Rugged RJ45 x 6
- Cap of M12 A-coding 5-pin connector x 1
- Quick Installation Guide