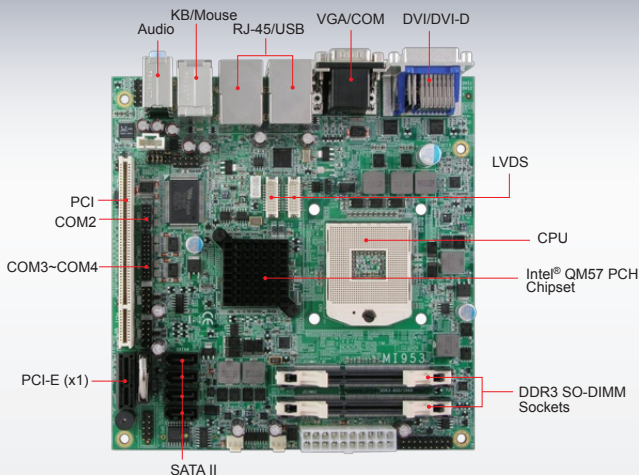




MI953F



Features

- Supports Intel® Core™ i7/ i5 32nm processors
- 2x DDR3 SO-DIMM (w/o ECC), Max. 4GB
- Supports CRT, DVI / DVI-D and LVDS (dual display)
- 2x Gigabit LAN
- 4x SATA II, 10x USB 2.0, 4x COM
- 1x Mini PCI-E, 1x PCI-E(x1), 1x PCI
- Optional AMT, RAID



System

CPU	Socket G1 (rPGA 989) for Intel® Core™ i7 / Core™ i5 processors
System Memory	2xDDR3 SO-DIMM, Max. 8GB
System Chipset	Intel® QM57 Express Chipset
BIOS	AMI
Watchdog Timer	256 levels
SSD	N/A
H/W Monitor	Yes
Expansion Slot	1x PCI, 1x PCI-E (x1), 1x Mini PCI-E (x1)

Mechanical and Environmental

Dimensions	170mm x 170mm (6.7" x 6.7")
Max. Power Requirement	TBC
Operating Temperature	0°C~60°C (32°F~140°F)
Storage Temperature	-20°C~80°C (-4°F~176°F)
Relative Humidity	10%~90% (non-condensing)

Graphics

VGA Controller	Intel® Core™ i7 / Core™ i5
VGA Memory	Max. shared memory - 352MB
Display Interface	Supports CRT, DVI-I, DVI-D & 24-bit dual channel LVDS

Ethernet

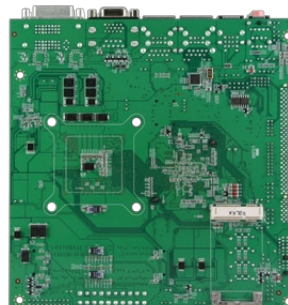
Controller	Intel® 82577LM Gigabit LAN Intel® 82574L PCI-E Gigabit LAN
Connector	Dual RJ-45 on board

Multi I/O

Chipset	Fintek 81865 1x Keyboard, 1x Mouse 3x RS232, 1x RS-232/422/485, 4x SATA II(3.0Gb/sec.)
USB	6 ports on board Pin header for 4 ports (USB 2.0)
Audio	Built-in HD audio w/ Realtek ALC888 codec for 7.1CH
Others	Digital I/O (4-in/4-out)

Ordering Information

MI953F	Socket G1 QM57 Mini-ITX motherboard w/ VGA, dual DVI & dual Gigabit LAN
MI953AF	Socket G1 QM57 Mini-ITX motherboard w/ VGA, dual DVI & dual Gigabit LAN, AMT(6.0), RAID



Remarks:
* Specifications are subject to change without prior notice.



- 1 Motherboards
- 2 Disk-Size SBCs
- 3 CPU Modules
- 4 PC/104 Puls
- 5 CPU Card
- 6 Embedded Systems
- 7 Network Security Appliance