

NE-4100 Series

10/100 Mbps embedded serial device servers

NE-4110S/4110A



NE-4120S/4120A

NE-4100T

- > 10/100 Mbps Ethernet interface
- > Up to 230.4 Kbps baudrate support
- > Choice of operation modes: Real COM, TCP Server, TCP Client, and UDP
- > DHCP, BootP, Static IP, and ARP supported
- > SNMP and e-mail alerts for event trapping and notification
- > Half the size of a credit card—only 57 × 40 mm
- > Low power consumption at 1.5W, with single +5V input

The certification logos shown here apply to some or all of the products in this section. For details, see "Regulatory Approvals" under "Specifications" below.



Overview

Moxa's NE-4100 embedded device servers are designed for manufacturers who want to add sophisticated network connectivity to their serial devices. Moxa's embedded device servers can be used to convert any device with a standard serial interface to an Ethernet-enabled device in no time. The NE-4100 embedded device servers

support 10/100 Mbps Ethernet, and provide ready-to-use operation modes, including TCP Server, TCP Client, and UDP. In addition, a Real COM driver is included for backward compatibility with legacy software.

SNMP and E-mail Alerts for Event Trap and Notification

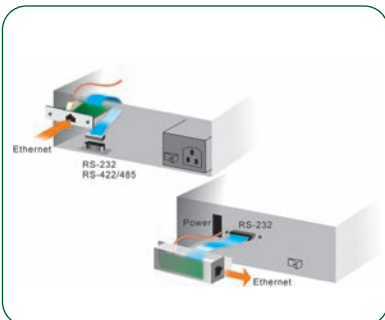
NE-4100 embedded device servers can be configured to send an SNMP trap or e-mail under the following conditions:

- Cold/warm start
- Password authentication failure
- Change in DSR/DCD line signal
- Change in IP address
- Change in password

On-site Configuration with Serial Command Mode

- Easy on-site configuration of network settings
- Simple command frame format
- Comprehensive command set for serial and network configuration
- Easily switch between software and hardware triggers
- Software reset

Typical Installation Examples



NE-4110: RJ45 Ethernet connector in stand-alone form factor



NE-4120: Pin-header Ethernet in stand-alone form factor

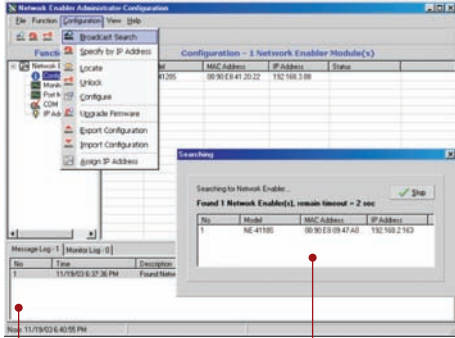


NE-4100T: Dual-in-line pin header in drop-in form factor

Powerful, User-friendly Utilities

Web-based Configuration

NE-4100 embedded device servers can be configured with the web console, which can be accessed from the web browser of any networked computer.



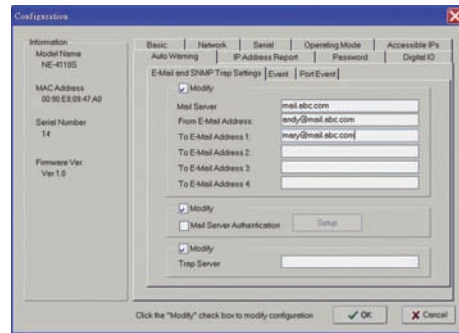
System log for cold boot, warm boot, etc.

Search for installed embedded device servers

Configure and manage embedded device servers with Moxa's Windows Utility

Network Enabler Administrator is a powerful, Windows-based configuration and management tool for NE-4100 embedded device servers. With Network Enabler Administrator, users can modify IP addresses, update communication parameters, and configure all other settings over the network. This utility has the following useful features:

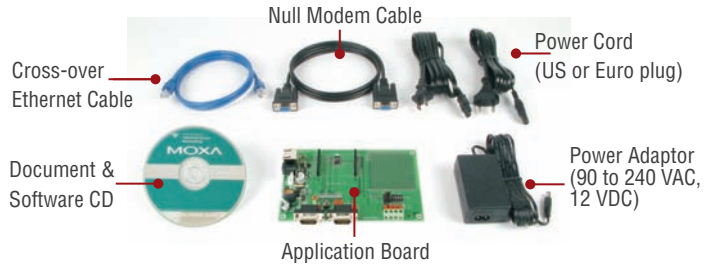
- Search your LAN for embedded device servers
- Export and import configuration parameters
- Upgrade firmware over the network
- Remotely monitor data traffic, serial line status, and TCP/IP connections
- Configure SNMP and e-mail alerts



Remotely configure serial, network, alarm, and other parameters

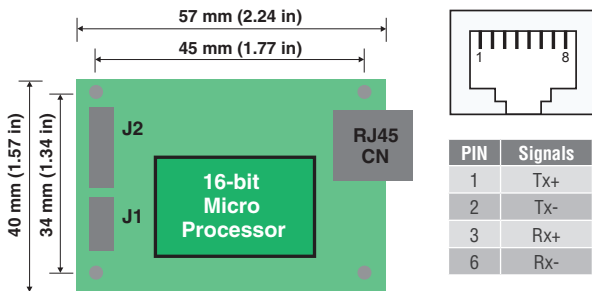
NE-4100 Starter Kit

The Network Enabler Starter Kit includes an evaluation board, power adaptor, software, and serial and Ethernet cables to allow quick and easy evaluation of all embedded device server functions. The evaluation board is equipped with serial, Ethernet, digital I/O, and power circuits to help you test your modules and applications.

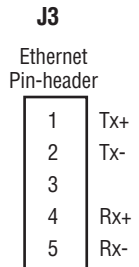
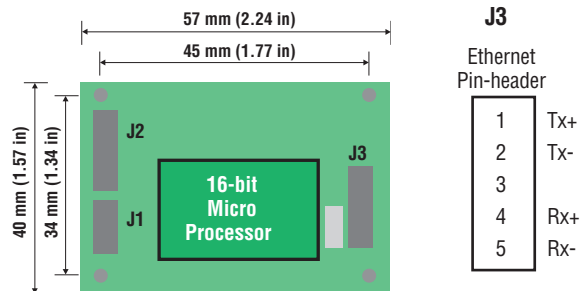


Dimensions and Pin Assignment

NE-4110S/4110A



NE-4120S/4120A



NE-4110/4120 Series

J2		
GND	14 13	VCC(+5V)
GND	12 11	VCC(+5V)
DIO0	10 9	10M_LED
DIO1	8 7	100M_LED
DIO2	6 5	Ready_LED
DIO3	4 3	Reset
TxD1	2 1	RxD1

NE-4110S/4120S

J1		
NC	10 9	NC
CTS0	8 7	RTS0
DSR0	6 5	GND
DTR0	4 3	TxD0
RxD0	2 1	DCD0

NE-4110A/4120A

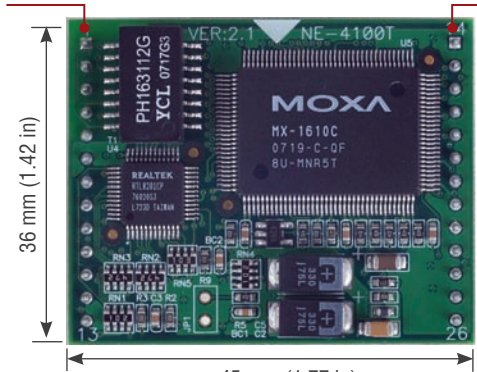
J1		
NC	10 9	NC
NC	8 7	NC
NC	6 5	GND
RxD- (Data-)	4 3	RxD+ (Data+)
TxD+	2 1	TxD-

For 2-wire RS-485 mode, Pin 3 is Data+, Pin 4 is Data-



NE-4110T

Pin No.	Signal
1	ETx+
2	ETx-
3	ERx+
4	ERx-
5	LED 10M
6	TxD0
7	RxD0
8	RTS0
9	CTS0
10	Reset
11	GND
12	GND
13	TxD1



Pin No.	Signal
14	PIO0
15	PIO1
16	PIO2
17	PIO3
18	LED 100M
19	DCD0
20	DSR0
21	DTR0
22	GND
23	Ready LED
24	+5V
25	+5V
26	RxD1

(45 × 36 mm, 26-pin DIL package, 2.54 mm pitch)

Specifications

Form Factor

Type:

NE-4110/4120: Ready-to-go stand-alone modules
NE-4100T: 26-pin dual-in-line package

Dimensions:

NE-4110/4120: 57 × 40 mm (2.24 x 1.57 in)
NE-4100T: 45 × 36 mm (1.77 x 1.42 in)

Weight:

NE-4110S/4110A: 40 g
NE-4120S/4120A/4100T: 20 g

Ethernet Interface

Number of Ports: 1

Speed: 10/100 Mbps, auto MDI/MDIX

Connector:

NE-4110 Series: RJ45
NE-4120 Series: 5-pin pin header
NE-4100T: 26-pin dual-in-line

Magnetic Isolation Protection: 1.5 KV built-in

Serial Interface

Number of Ports: 2

Serial Standards:

Port 1:
NE-4110S/4120S: RS-232
NE-4110A/4120A: RS-422, RS-485-4w, RS-485-2w
NE-4100T: TTL
Port 2:
TTL console port

RS-485 Flow Control: ADDC® (automatic data direction control)

Serial Communication Parameters

Data Bits: 5, 6, 7, 8

Stop Bits: 1, 1.5, 2

Parity: None, Even, Odd, Space, Mark

Flow Control: DSR/DTR and RTS/CTS (RS-232 only), XON/XOFF

Baudrate: 110 bps to 230.4 Kbps

Serial Signals

TTL:

Port 1: TxD, RxD, RTS, CTS, DTR, DSR, DCD, GND
Port 2: TxD, RxD, GND

RS-232: TxD, RxD, RTS, CTS, DTR, DSR, DCD, GND

RS-422: Tx+, Tx-, Rx+, Rx-, GND

RS-485-4w: Tx+, Tx-, Rx+, Rx-, GND

RS-485-2w: Data+, Data-, GND

Digital I/O Pins

GPIO: 4 programmable I/O pins

Software

Network Protocols: ICMP, ARP, IP, TCP, UDP, DHCP, Telnet, HTTP, SNMP V1/V2c, SMTP

Configuration Options: Web Console, Serial Console, Telnet Console, Windows Utility

Windows Real COM Drivers: Windows 95, 98, ME, NT, 2000, XP x86/x64, 2003 x86/x64, Vista x86/x64, 2008 x86/x64, Embedded CE 5.0/6.0, XP Embedded

Fixed TTY Drivers: SCO Unix, SCO OpenServer, UnixWare 7, UnixWare 2.1, SVR 4.2, QNX 4.25, QNX 6, Solaris 10, FreeBSD, AIX 5.x, HP-UX 11i

Linux Real TTY Drivers: Linux kernel 2.4.x, 2.6.x

Operation Modes: Real COM, TCP Server, TCP Client, UDP

Environmental Limits

Operating Temperature:

Standard Models: 0 to 55°C (32 to 131°F)

Wide Temp. Models: -40 to 75°C (-40 to 167°F)

Operating Humidity: 5 to 95% RH

Storage Temperature: -20 to 70°C (-4 to 158°F)

Power Requirements

Input Voltage: 5 VDC ($\pm 5\%$)

Power Consumption: 290 mA @ 5 VDC max.

Regulatory Approvals

EMC: CE EN55022 Class A, FCC Part 15 Subpart B Class A

Reliability

Automatic Reboot Trigger: Built-in WDT (watchdog timer)

MTBF (meantime between failures):

NE-4100T: 288173 hrs

NE-4110A: 289573 hrs

NE-4110S: 290276 hrs

NE-4120A: 289573 hrs

NE-4120S: 285874 hrs

Warranty

Warranty Period: 5 years

Details: See www.moxa.com/warranty

Ordering Information

Available Modules

NE-4110S: Device server module for RS-232 devices, supports 10/100BaseT(x) with RJ45 connector

NE-4110A: Device server module for RS-422/485 devices, supports 10/100BaseT(x) with RJ45 connector

NE-4120S: Device server module for RS-232 devices, supports 10/100BaseT(x) with 5-pin Ethernet pin header

NE-4120A: Device server module for RS-422/485 devices, supports 10/100BaseT(x) with 5-pin Ethernet pin header

NE-4100T: Device server module for TTL devices, supports 10/100BaseT(x) with DIL package

Available Starter Kits

NE-4110-ST: Starter kit for the NE-4110S and NE-4110A

NE-4120-ST: Starter kit for the NE-4120S and NE-4120A

NE-4100-ST: Starter kit for the NE-4100T

Package Checklist (modules)

- NE-4100 series module

Package Checklist (starter kits)

- NE-4100-ST or NE-4110-ST or NE-4120-ST evaluation board
- Universal power adaptor
- 2 power cords
- Null modem cable
- Cross-over Ethernet cable
- Document and Software CD
- Quick Installation Guide (printed)
- Warranty Card