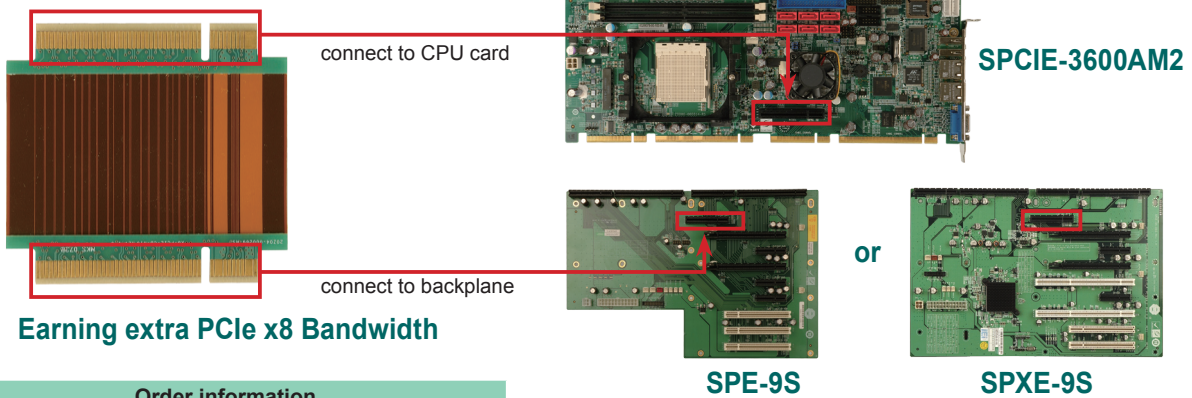


X8-PCIE-CB-R10 PCIE x8 conversion board for PICMG 1.3 server grade SBC



Earning extra PCIe x8 Bandwidth

Order information

- X8-PCIE-CB-R10
PCIE x8 conversion board for PICMG 1.3 server grade SBC
- SPCIE-3600AM2
Full-size PICMG 1.3 CPU card, server grade
- SPE-9S
9 slot PICMG 1.3 backplane with 2 PCIe x16 (x8 signal)
3 PCIe x4, and 3 PCI
- SPXE-9S
9 slot PICMG 1.3 backplane with 2 PCIe x16 (x8 signal)
2 PCIe x4, 2 PCI-X and 2 PCI

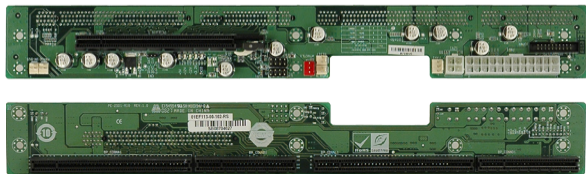
Combine photo



IEI PICMG 1.3 Graphic Grade Backplane Solution

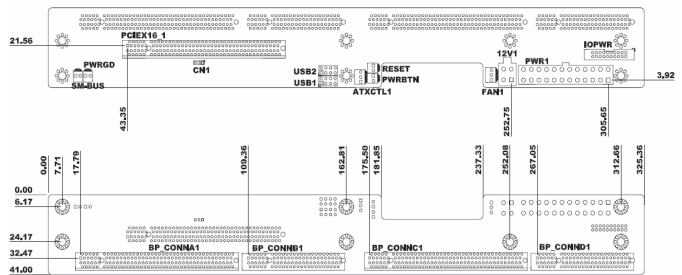
PE-2SD1-R10

Ready for 1U system!



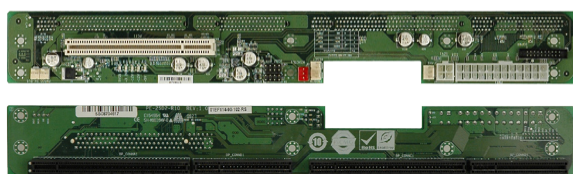
Order information

- PE-2SD1-R10
1U chassis backplane with one PCIe x16 slot



PE-2SD2-R10

Ready for 1U system!



Order information

- PE-2SD2-R10
1U chassis backplane with one PCI slot

