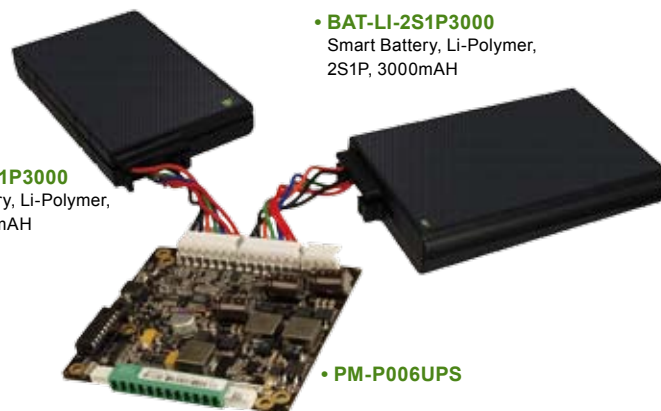


PM-P006UPS

65 W DC/DC Converter Module, with UPS



• **BAT-LI-2S1P3000**
Smart Battery, Li-Polymer,
2S1P, 3000mAH



• **BAT-LI-2S1P3000**
Smart Battery, Li-Polymer,
2S1P, 3000mAH

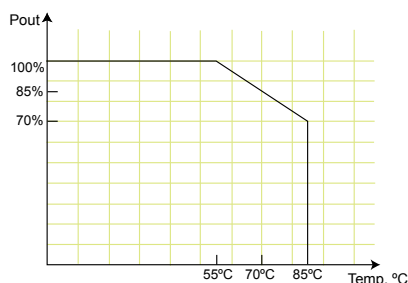
• **PM-P006UPS**

Features

1. Load down protection
2. Over voltage protection
3. Short circuit protection
4. Over current protection
5. Smart battery charger for Li-Polymer
6. I/O interface: SMBus/I2C & RS-232
7. Support up to 2 battery packs
8. AT/ATX modes
9. Utility program: pull data out through RS-232 to a system

Specifications

- Output (max.): 12 V@4 A, 5 V@10 A, 3.3 V@8 A, 5 VSB@1 A, & -12 V@0.1 A
Max. total output: 65 W
- Input: 6 VDC to 36 VDC
- Battery charge voltage: 12 V ~ 36 V
- Efficiency: up to 90%
- Dimensions: 90 mm x 96 mm
- Weight: NW: 178 g
- Operating temperature: -20°C ~ 85°C
- Storage temperature: -40°C ~ 125°C



Applications



Battery backup system

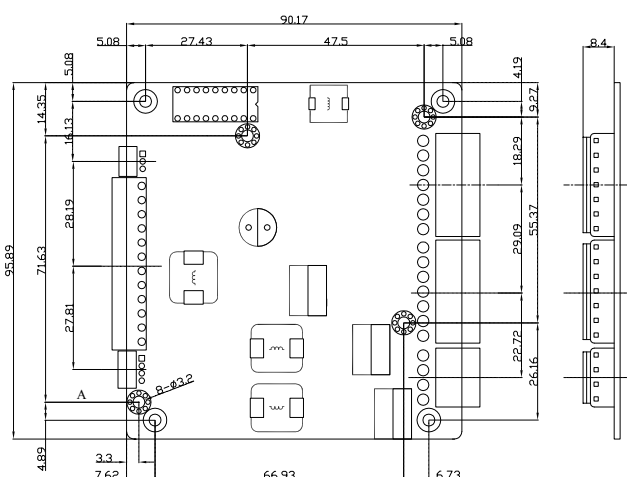


Portable equipment



Power sensitive equipment

Dimensions (Millimeters)



Packing Information

- 1 x PM-P006UPS
- 1 x QIG
- 1 x Utility CD
- 1 x DB-9 pin connector cable (32100-157200-RS)

Ordering Information

Part No.	Description
PM-P006UPS-R10	65 W ATX DC/DC 6-36 VDC input, 12 V, 5 V, 3.3 V, -12 V and 5 VSB PC/104 power module with UPS
BAT-LI-2S1P3000	Smart battery, Li-Polymer, 2S1P, 3000 mAH
CB-JST3PSW001-RS	30 cm power on/off switch cable
CB-P1LP4-RS	20 cm cable for FSP0601AD101C 60 W/UP0451E12P 45 W/UP0251E12P 25 W AC-DC adapter
CB-MD4P4-RS	16 cm cable for 63000-FSP120AAB-RS 120 W AC-DC adapter
CB-NOLP4-RS	20 cm cable for terminal block DC input

High Energy Density, Light Weight and Compact DC/DC UPS & Power Module

Protect your precious equipment from damage. Reduce the risk of losing valuable data.

An uninterruptible power supply provides emergency backup power when the main power is lost.

Benefits:

- Provides power for a certain amount of time after a power failure has occurred.
- Provides stable power to equipment during line sags and spikes.
- Absorb power surges and transients.
- Smooth out noisy power sources.

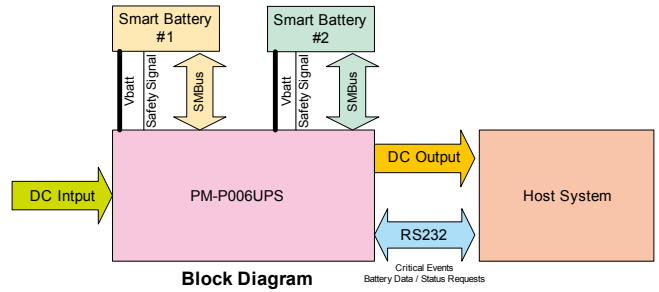
The utility software displays the following information:

- Current power source
- Battery status
- Charging status
- Remaining battery percentage



Battery Capacity Status

Level 2 Smart Battery Charger & Power Modules



Block Diagram



Battery Monitoring Utility



Battery Monitoring connection cable (PN: 32100-157200-RS)

Battery Pack (P/N: BAT-LI-2S1P3000)



Battery Type	Li-Polymer			
Pout(W)	100	80	60	40
Time(min)	8	14	22	35
Dimensions	DR202 package 148x89x20 mm			
Capacity	3000 mAh			
Weight	230 g			

Pin Assignments

Input Power Connector

CN1	Pin 1	Pin 2	Pin 3	Pin 4
	VIN	VIN	Gnd	Gnd

I/O Interface RS-232 Connector

JP2	Pin1	Pin2	Pin3
	Gnd	TX	RX

Output Power Connector

CN7	Pin1	Pin2	Pin3	Pin4	Pin5	Pin6	Pin7	Pin8	Pin9	Pin10	Pin11	Pin12
	N12V	Gnd	12 V	Gnd	3 V	3 V	Gnd	5 V	5 V	Gnd	5 VSB	Gnd

ATX Mode Connector

CN2	Pin1	Pin2	Pin3	Pin4
	PWROK	5 VSB	Gnd	PS_ON

Battery Connector

J1 J2	Pin1	Pin 2	Pin 3	Pin 4	Pin 5	Pin 6	Pin 7
	BAT+	BAT+	Clock	Data	Temp	Gnd	Gnd

Wire Harness Selection Guide

DC Input



Options 1.
PN: CB-P1LP4-RS
 Cable for FSP0601AD101C 60 W / UP0451E12P 45 W/UP0251E12PL 25 W AC-DC adapter



Options 2.
PN: CB-MD4P4-RS
 Cable for 63000-FSP120AAB-RS 120 W AC-DC adapter



Options 3.
PN: CB-NOLP4-RS
 Cable for terminal block

Power On/Off



Options 1.
PN: CB-JST3PSW001-RS
 Cable to SBC(power ok & 5 VSB)
 Pin1= Power ok
 Pin2= 5 VSB
 Pin3, 4= Connector switch