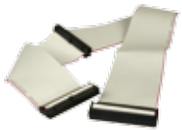


# Cables and Connectors

## 32200-000017-RS



FDD flat cable (34p-34p-34p)  
Length: 37 cm + 15 cm  
RoHS

## 32200-000058-RS



FDD flat cable (34p-34p)  
Length: 35 cm  
RoHS

## 32000-062800-RS



SATA HDD lockable round cable  
Length: 50 cm  
RoHS  
Lockable connector

## 32100-088600-RS



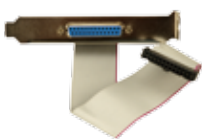
SATA power wire cable for  
2 devices  
Length: 15 cm  
RoHS

## 32000-080700-RS



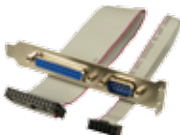
SATA HDD lockable + power cable  
SATA cable length: 20 cm  
Power cable length: 10 cm  
RoHS

## 19800-000049-RS



One parallel port cable with bracket  
DB25F connector to 26-pin (2x13)  
connector (2.54 mm pitch)  
Length: 24 cm  
RoHS

## 19800-000050-RS



Parallel and serial port cable with bracket  
DB25F connector to 26-pin (2x13)  
connector (2.54 mm pitch)  
DE9M connector to 10-pin (2x5)  
connector (2.54 mm pitch)  
Length: 24 cm  
RoHS

## 19800-000027-RS



Parallel and serial port cable with bracket  
DB25F connector to 26-pin (2x13)  
connector (2.0 mm pitch)  
DE9M connector to 10-pin (2x5)  
connector (2.0 mm pitch)  
Length: 24 cm  
RoHS

## 32200-015100-RS



One parallel port cable without bracket  
DB25F connector to 26-pin (2x13)  
connector (2.0 mm pitch)  
Length: 28 cm  
RoHS

## 32200-000005-RS



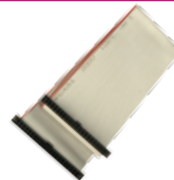
ATA-33 IDE flat cable (40p-40p-40p)  
L: 40 cm + 17 cm  
RoHS

## 32200-000009-RS



HDD flat cable (44p-44p)  
Length: 40 cm  
RoHS

## 32200-000037-RS



HDD flat cable (44p-44p)  
Length: 25 cm  
RoHS

## 32200-025001-RS



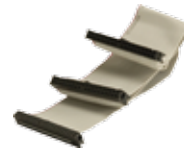
HDD flat cable (44p-40p-40p)  
Length: 20 cm + 15 cm  
RoHS

## 32200-000052-RS



ATA-66 HDD flat cable  
(40p-40p-40p)  
Length: 30 cm + 15 cm  
RoHS

## 32200-008800-RS



ATA-33 HDD flat cable  
(44p-40p-40p)  
RoHS

## CB-HD32-RS



40-pin IDE to 44-pin 2.5" HDD cable  
Length: 39 cm  
RoHS

## CVT-4044-RS



Slim type HDD adapter  
IDE HDD 40-pin to 44-pin adapter  
RoHS