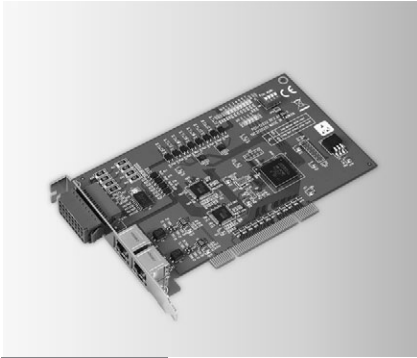


PCI-1202U PCM-3202I PCM-3202P

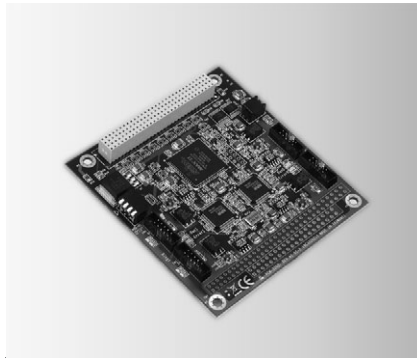
2-port AMONet RS-485 PCI Master Card

2-port AMONet RS-485 PCI-104 Master Card

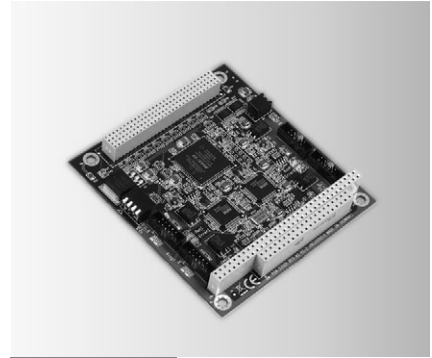
2-port AMONet RS-485 PC/104+ Master Card



PCI-1202U



PCM-3202I



PCM-3202P



Specifications

AMONet RS-485 Motion Control

- **AMONet RS-485** 2 rings
- **Interface** Half duplex RS-485
- **Cable Type** CAT5 UTP/STP Ethernet cable and above
- **Surge Protection** 10 kV
- **Transmission Speeds** 2.5, 5, 10, and 20 Mbps
- **Data Flow Control** Automatic
- **Communication** 100 m @ 20 Mbps w/32 slave modules
Distance (Max.)
100 m @ 10 Mbps w/64 slave modules
- **Slave Module** Digital I/O, Motion Control, Analog I/O

Isolated Digital Input

- **Channels** 8
- **Input Voltage** Dry contact (need external voltage source)
- **Isolation Protection** 2,500 V_{DC}
- **Input Resistance** 2.4 kW @ 0.5 W

Isolated Digital Output

- **Channels** 4
- **Output Type** Open collector
- **Isolation Protection** 2,500 V_{DC}
- **Output Voltage** 10 ~ 30 V_{DC}
- **Sink Current** 1 ch: Max. 1A
4 ch: Max. 1.1A (total)

General

- **Bus Type** Universal PCI V2.2
- **Certifications** CE, FCC Class A
- **Connectors** 2 x RJ45
- **Dimensions (L x H)** 175 x 100 mm (6.9" x 3.9")
- **Power Consumption** 5 VDC @ 0.5 A typical
- **Humidity** 5 ~ 95% RH, non-condensing (IEC 68-2-3)
- **Operating Temp.** 0 ~ 60° C (32 ~ 140° F)
- **Storage Temp.** -20 ~ 85° C (-4 ~ 185° F)

Ordering Information

- **PCI-1202U** 2-port AMONet RS-485 PCI Master Card

Specifications

AMONet RS-485 Motion Control

- **AMONet RS-485** 2 rings
- **Interface** Half duplex RS-485
- **Cable Type** CAT5 UTP/STP Ethernet cable
- **Surge Protection** 10 kV
- **Transmission Speeds** 2.5, 5, 10, and 20 Mbps
- **Data Flow Control** Automatic
- **Communication** 100 m @ 20 Mbps w/32 slave modules
Distance
- **Slave Module** Digital I/O, Motion Control, Analog I/O

General

- **Bus Type** PCI-104
- **Certifications** CE, FCC Class A
- **Connectors** 4 x 10-pin box header
- **Dimensions (L x H)** 96 x 90 mm (3.8" x 3.5")
- **Power Consumption** 5 V_{DC} @ 0.5 A typical
- **Humidity** 5 ~ 95% RH, non-condensing (IEC 68-2-3)
- **Operating Temp.** 0 ~ 60° C (32 ~ 140° F)
- **Storage Temp.** -20 ~ 85° C (-4 ~ 185° F)

Ordering Information

- **PCM-3202I** 2-port AMONet RS-485 PCI-104 Master Card

Specifications

AMONet RS-485 Motion Control

- **AMONet RS-485** 2 rings
- **Interface** Half duplex RS-485
- **Cable Type** CAT5 UTP/STP Ethernet cable
- **Surge Protection** 10 kV
- **Transmission Speeds** 2.5, 5, 10, and 20 Mbps
- **Data Flow Control** Automatic
- **Communication** 100 m @ 20 Mbps w/32 slave modules
Distance
- **Slave Module** Digital I/O, Motion Control, Analog I/O

General

- **Bus Type** PC/104+
- **Certifications** CE, FCC Class A
- **Connectors** 10-pin box header x 4
- **Dimensions** 96 x 90 mm (3.8" x 3.5")
- **Power Consumption** +5 V_{DC} @ 0.5 A typical
- **Humidity** 5 ~ 95% RH, non-condensing (IEC 68-2-3)
- **Operating Temp.** 0 ~ 60° C (32 ~ 140° F)
- **Storing Temp.** -20 ~ 85° C (-4 ~ 185° F)

Ordering Information

- **PCM-3202P** 4-port PC/104+ AMONet RS-485 Master Card