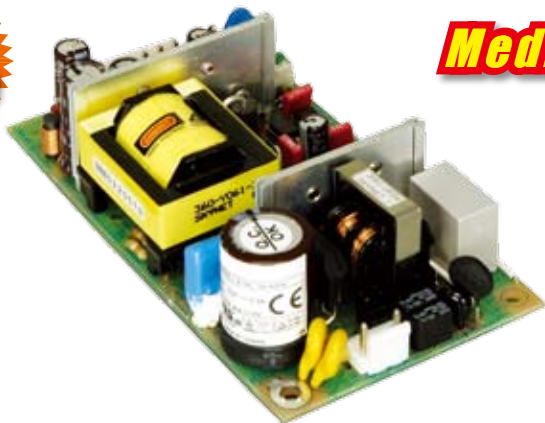


ACE-706AM

60W AC-DC Open Frame Medical AT Power Supply



Medical



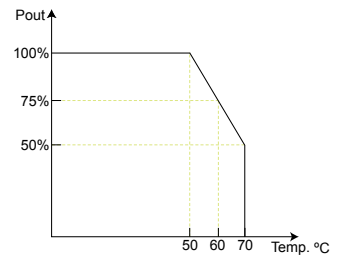
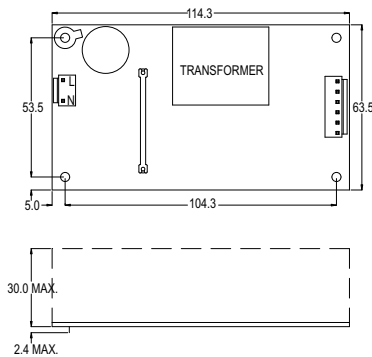
Features

1. Only 1.28 inch height
2. 4.2 Watt per cubic inch
3. With ITE & Medical safety
4. High Efficiency 82%
5. Operation from 0°C to 70°C by convection
6. Single side PCB for low assembly cost

Specifications

Input	Voltage	90 ~ 264VAC Full Range		
	Frequency	47 ~ 63Hz		
	Input Current	2A(RMS)@115V 1A(RMS)@230V		
	Inrush Current	30A Max for 115VAC 60A Max for 230VAC		
Output	Voltage	Min. load	Max. load	Ripple & Noise
	+5V	0A	3A	1%
	+12V	0A	3A	1%
	-12V	0A	0.3A	1%
	Over-voltage protection		latch off	
Short Circuit protection		auto recovery		
General Specifications	Watt	60W		
	PFC	-		
	Hold-up time	16 ms Min.		
	Efficiency	82%		
	MTBF	100,000 hours		
	Temperature	Operation: 0 ~ 70°C Storage: -40 ~ 85°C		
	Outline Connector	Optional Cable		
	Dimensions	63.5 X 114.3 X 32.4 (mm) 2.5 X 4.5 X 1.28 (inch)		

Dimensions



Optional 1 AC Input Solution



PN: CB-704EC-RS
AC input cable with fuse, 20cm

Optional 2 Embedded Solution



PN: CB-704EB-RS
DC cable to CPU Board, W/4pin 12V CPU/ HDD/ SATA connector, 30cm

Optional 3 ATX Backplane Solution



PN: CB-704BP-RS
DC cable to Backplane, W/ 20pin ATX/HDD/ SATA connector, 30cm

Optional 4 AT P8P9 Backplane Solution



PN: CB-704P8P9-RS
DC cable AT power to P8P9, w/HDD/SATA connector, 30cm



12V Only connector (CB-704EB-RS)



SATA Device connector



IDE Device connector



ATX Backplane connector (CB-704BP-RS)

Ordering Information

Part No.	Description
ACE-706AM-RS	60W AC-DC Open Frame Medical AT Power Supply.RoHS