

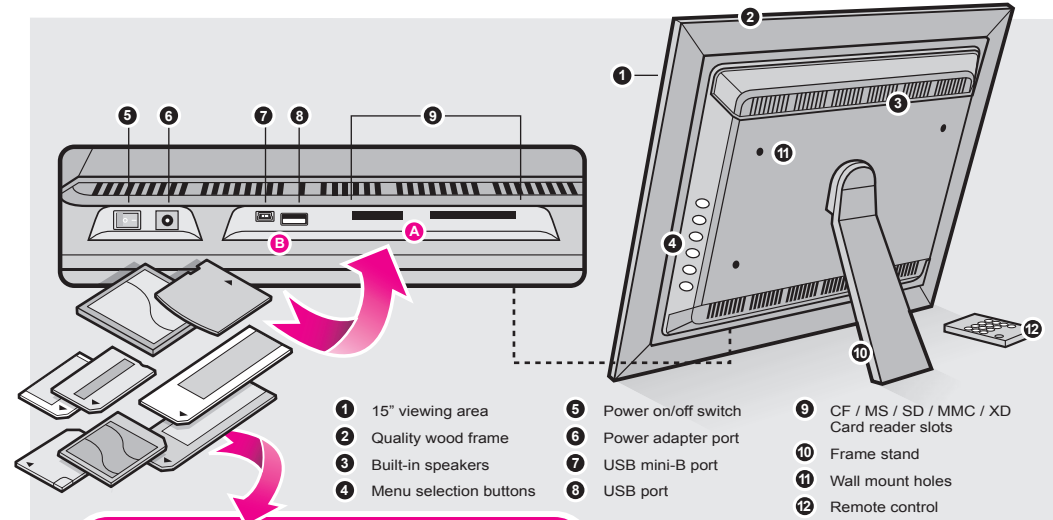


# 15" Digital Photo Frame w/ 256MB memory included

View pictures / Listen to music / Watch movies and home videos!

### Features

- Easy operation as most file formats are automatically recognized
- High quality wooden frame
- High quality built-in speakers
- 256MB memory included
- 15" TFT true color LCD
- Supports most memory card formats such as: **CF / MS / SD / MMC / XD**
- Supports various picture / video / audio formats such as: **JPEG, MPEG, AVI, MP3, BMP and WMA**
- Setup slideshows with background music
- Built-in calendar and timer to turn on / off frame
- Connect your personal computer, digital camera, digital camcorder or USB drive and easily transfer your favorite pictures, music, or videos with hi-speed USB 2.0
- Can be displayed either on a table top with the included stand or mounted on a wall
- Ease of operation and control with the included remote
- 120 day limited warranty and lifetime toll free tech support



**A** Insert any of the following memory cards:  
**Compact Flash (CF) Type I, II, Ultra & Extreme; Secure Digital (SD); MMC; RS-MMC\*;**  
**Memory Stick (MS); Memory Stick Pro;**  
**Memory Stick Duo; Memory Stick Pro Duo; XD**  
\* adapter required

**-OR-** **B** Connect your digital camera, digital camcorder or USB drive through the unit's USB ports

### Specifications

Brightness	250cd / m <sup>2</sup> max
Compatible Memory Cards	CF / MS / SD / MMC / XD
Console Connector	1 x USB Type-A, 1 x USB mini-B
Contrast Angle	250:1
Display Area	15 in. (12 in. x 9 in.)
Operating Temperature	-10°C~40°C (14°F~104°F)
Input Voltage	Ac110 / 240V
Media Formats	JPEG, MPEG, AVI, MP3, BMP and WMA
Storage Temperature	20°C~60°C (-4°F~140°F)
Unit Dimensions (L x W x H)	19.75 in. x 16.5 in. x 2.5 in. (50.2 cm x 42 cm x 6.4 cm)
Unit Weight	6.5 lbs.
Viewing Angle	65° (left or right)

### Package Contents

- 15" Digital Photo Frame
- Remote Control
- USB 2.0 Cable (Type A to mini-B)
- Power Adapter
- Instructional Manual
- Warranty / Registration Card

