

# PCM-3730

## Communication Modules

Computing Platform Service Partner

01 Compact Boards

02 SubCompact Boards

03 Embedded Motherboards

04 PC/104 CPU Modules

05 COM Express CPU Modules

06 ETX CPU Modules

07 RISC CPU Modules

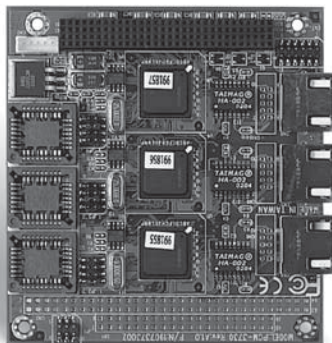
08 Media PCs

09 Mini PCI Modules

10 PC/104 Peripheral Modules

11 Accessories

## PCI-104 Triple Ethernet Module



### Features

- PCI-104 Interface
- Three 10/100Base-TX Ethernet Ports
- RJ-45 Interface Connector
- Supports Wake-on-LAN function

### Ordering Information

- PCM-3730-A10  
PCI-104 Board Plus Triple Ethernet Module Rev. A1.0

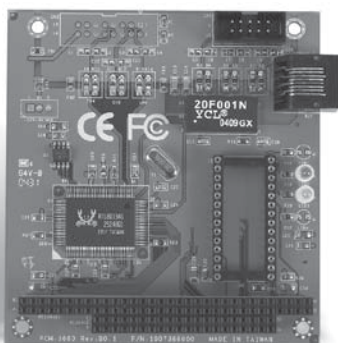
### Specifications

Chipset	Intel® 82559
Speed	Supports 10Mbps & 100Mbps, auto-negotiation Full Duplex support at both 10 and 100 Mbps
Protocol	Supports Priority Packet (IEEE 802.1p) and Virtual LAN support (IEEE 802.1Q) Supports 100Base-TX Flow Control (IEEE 802.3x)
Power Management	ACPI and PCI Power Management
Other	Boot ROM function supported
Operating Temperature	32°F ~ 140°F (0°C ~ 60°C)

# PCM-3660 Rev.B

## Communication Modules

## PC/104 Ethernet Module



### Features

- Hardware and Software Compatible with Novell NE2000
- Automatically Detects 8-bit or 16-bit Data Bus

### Ordering Information

- TF-PCM-3660-B10  
PC/104 Board 10Base-T Ethernet Module

### Specifications

I/O address	200, 220, 240, 260, 280, 2A0, 2C0, 300, 320, 340, 380, 3A0
Interrupt level	IRQ 3, 4, 5, 9, 10, 11, 12 or 15
Boot ROM address	C0000, C8000, D0000 or D8000H
Data Bus	8-bit, 16-bit, or auto-sensing
Standard	IEEE 802.3 10Mbps CSMA/CD 10Base-T Transceiver
Power Consumption	+5V@400mA max
Operating Temperature	32°F ~ 140°F (0°C ~ 60°C)