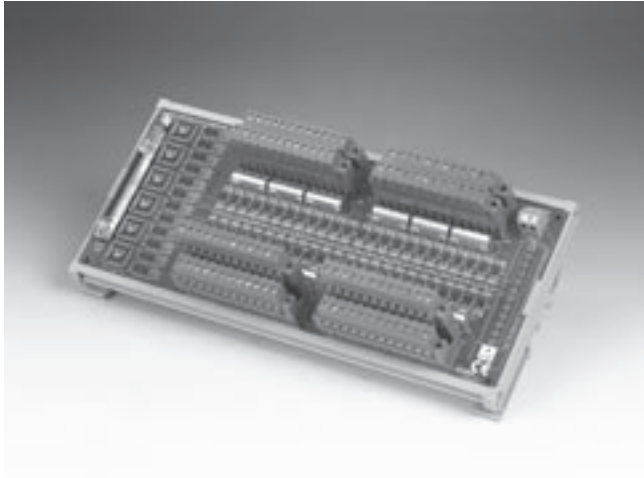


# PCLD-8751

# PCLD-8761

## 48-ch Opto-Isolated Digital Input Board

## 24-ch Opto-Isolated DI and 24-ch Relay Output Board



PCLD-8751



### Features

- 48 optically-isolated digital input channels
- Built-in plug-in screw terminals for easier wiring
- LEDs indicate input logic status
- Input buffered with voltage comparators
- Wet/Dry contact set by DIP switches
- Input logic set by jumper
- Wide input range from 5 to 30 V

### Specifications

#### Digital Input

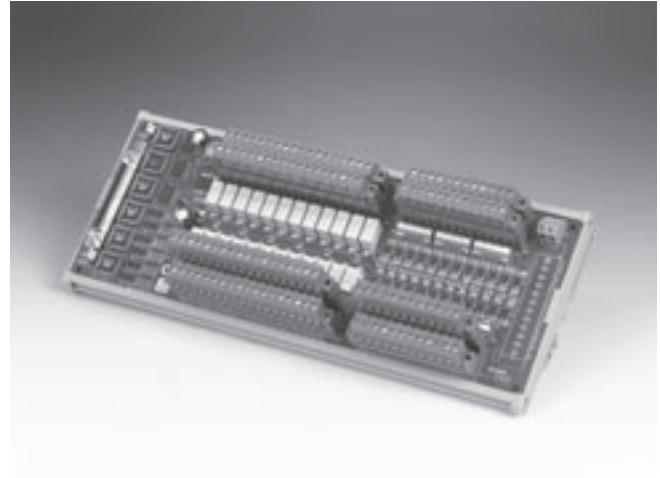
- **Channels** 48 isolated digital inputs
- **Contact Mode** Wet contact  
Dry contact (set by switch)
- **Isolation Voltage** 3500 V
- **Logic Modes** Positive Logic  
Negative Logic (set by jumper)
- **Signal Voltage** 0 ~ 30 V  
VIH (MIN) : 4 V, VIL (MAX) : 1 V

#### General

- **Certifications** CE
- **Connectors** Controller: SCSI-68 male  
Digital Input; Plug-in screw terminals: (#14 ~ 24 AWG)
- **Dimensions** 255 x 121 mm
- **LED Indicators** One for each channel to indicate logic status
- **Mounting** DIN-rail

### Ordering Information

- **PCLD-8751** 48-ch Opto-isolated Digital Input Board



PCLD-8761



### Features

- Built-in plug-in screw terminals for easier wiring
- LED status indicators for D/I and relay output
- Digital inputs buffered with voltage comparators
- Wet/Dry contact set by DIP switches for D/I
- Wide input range from 5 to 30 V
- INT/EXT Power selection by jumper

### Specifications

#### Digital Input

- **Channels** 24 IDI with LED and 24 Relay (SPDT) Form C with LED
- **Contact Mode** Wet contact and dry contact for each IDI (set by switch)
- **Digital Input** 0 ~ 30 V VIH (MIN) : 4 V, VIL (MAX) : 1V
- **Isolation Voltage** 3,500 V (Isolated DI), 1,500V (Relay)
- **Logic Mode** Positive Logic Negative Logic (set by jumper)  
**(IDI and Relay are independent)**

#### Relay Output

- **Contact Rating** 30 V<sub>DC</sub> @ 1 A, 120 V<sub>AC</sub> @ 0.5 A
- **Contact Resistance** < 100 ohm
- **Electrical Endurance** 5\*10<sup>7</sup> times at 12 V/10 mA
- **Mechanical Endurance** 108 times
- **Operation Time** 5 ms Max
- **Release Time** 6 ms Max

#### General

- **Certifications** CE
- **Connectors** Controller: SCSI-68 male  
Digital Input: Plug-in screw terminals: (#14 ~ 24 AWG)
- **Dimensions** 285 x 121 mm
- **Mounting** DIN 35 rail
- **Power Consumption** +5 V @ < 380 mA +50\*n (mA)  
+12 V @ < 240 mA +70\*n (mA)  
(\*n indicate the number of relays)
- **Power Selection** PCI Bus or External power(7 ~ 30 V) by jumper

### Ordering Information

- **PCLD-8761** 24-ch Opto-isolated DI and 24-Channel Relay (SPDT) Output Board